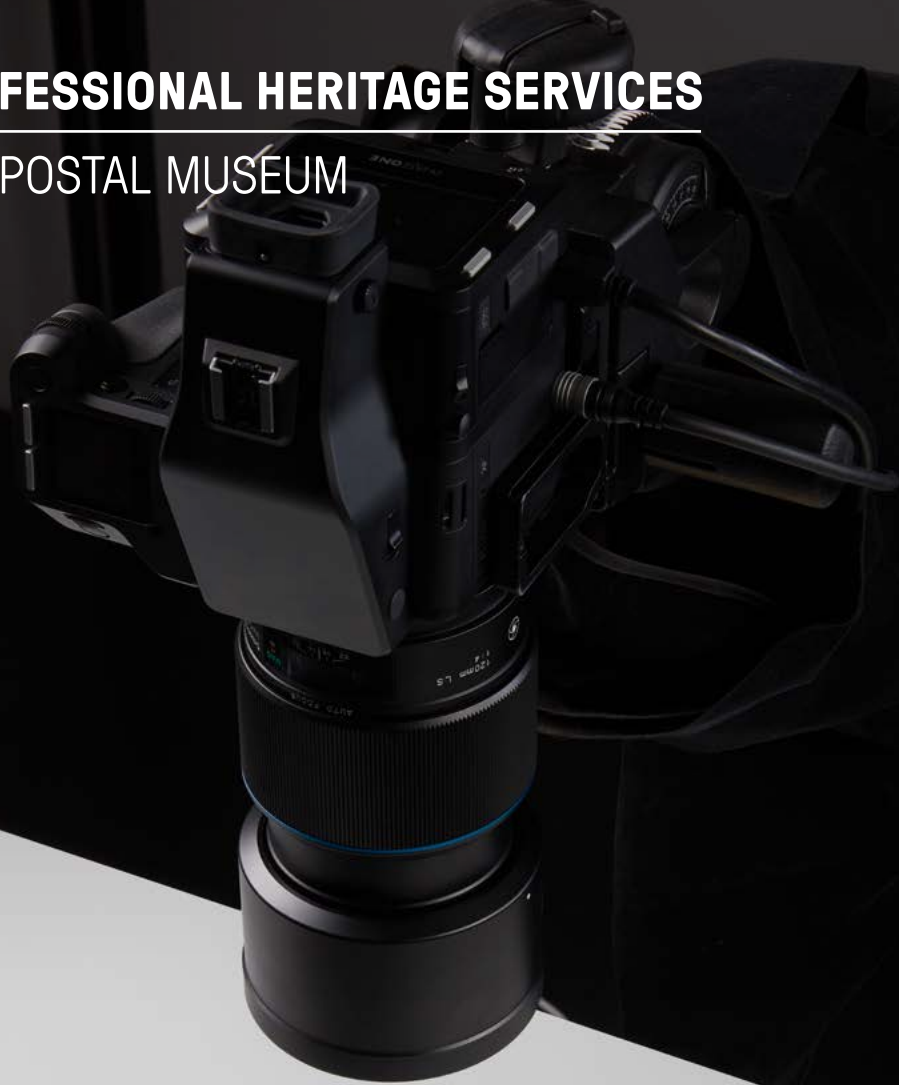


# PROFESSIONAL HERITAGE SERVICES

## THE POSTAL MUSEUM





## **Professional Heritage services at The Postal Museum**

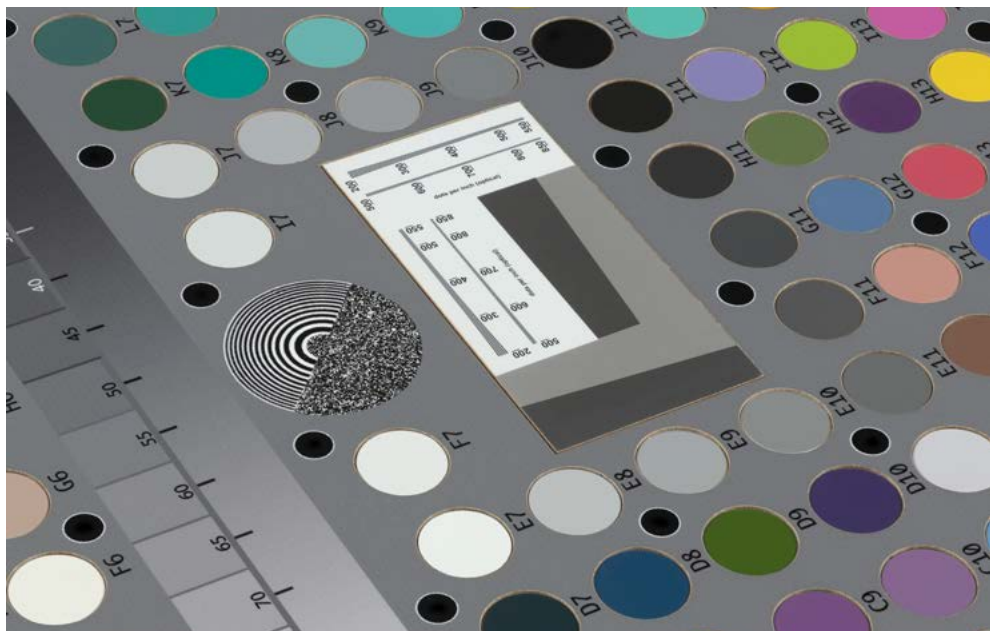
Here at The Postal Museum, we offer a range of cultural heritage services to other museums, archives, cultural organisations and individual clients. Our team of museum professionals provide bespoke solutions to small and large-scale commissions alike.

We aim to bring The Museum's core values of openness, innovation and generosity to the work we do with our external partners and treat their material and projects with the same professional care and enthusiasm that we do those of our own collections.

## **Photography Services**

The Postal Museum has a secure, well-equipped climate monitored studio offering high-resolution photographic services. The diversity of our own collection means that we are skilled in photographing almost any item, from delicate postage stamps, fragile books and paintings to large scale machinery and vehicles.

We work to the highest level of colour accuracy, conforming to the ISO 19264 standards for assessing image quality, using state of the art Golden Thread software and imaging targets. Apart from offering photographic services



from our studio in Central London, location work is also available, for example for immovable items and exhibition installations.

The studio offers consultation and training services and can project manage the design and build of photographic studios should you wish to establish your own space. We are also able to offer complete production solutions working directly with printers, publishers and designers on facsimile, publication and exhibition projects.

## Services Summary

- **Fully equipped photographic studio:** Phase One 100MP digital capture backs and Xenon Flash
- **Dedicated high-resolution book capture system:** BookDrive Mark II equipped with Canon 50MP cameras
- **ISO 19264-1 image quality compliant workflow:** image system calibration using Image Science Association's software and targets
- **Verified quality:** Golden Thread Image quality reports generated supplied for each job



- **Secure image storage:**  
multiple onsite and cloud-based backup of jobs
- **Ultra-high-resolution imaging:**  
1:1 photography of oversize maps, paintings and other flat items
- **Location based photography:**  
for both small jobs and longer-term digitisation projects
- **Consultation and training services:** tailored to meet a client's needs
- **Full metadata services:**  
database ready digitisation projects
- **Project supervision for exhibition and publication outputs:** advice on suitable materials and suppliers available
- **Facsimile production:**  
accurate reproductions for both exhibition and handling
- **Documentary photography:**  
location based creation of material for exhibition and promotional use



## Conservation Services

The Postal Museum has a fully equipped onsite conservation studio and team of conservators that offer expert services to individuals and organisations as well as working directly with the Photography Studio on its digitisation projects. Conservation can be undertaken on individual items or collections. The studio also offers consultation and professional advice based on the project's needs.

Our conservators will use their professional judgement and experience to guide you in making

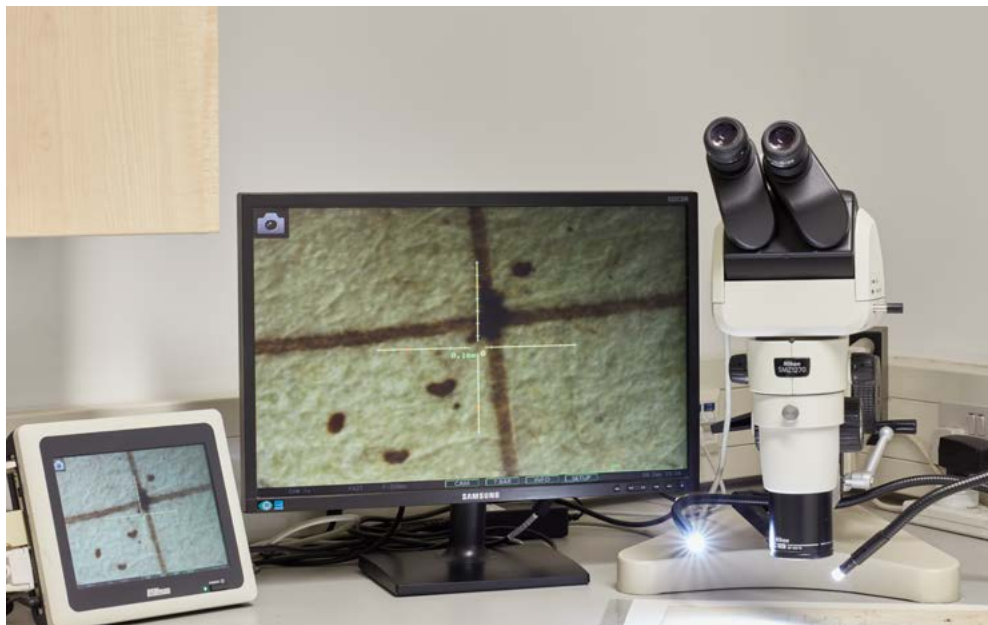
the right decisions for your item or collections. They will advise on and create a bespoke conservation treatment plan based on a condition assessment.

## Services Summary

- **Experienced, professionally trained conservation staff:** accredited members of the Institute of Conservation (ICON)
- **Clear condition reporting and treatment documentation:** clients provided with assessments, tailored treatment proposals and records



- **Purpose-built conservation studio:** secure, climate-monitored workspace with wet treatment facilities, fume extraction, microscopic analysis capability and specialist equipment including light tables
- **Specialist paper, book and archive conservation:** documents, artworks on paper, books, ephemera and mixed-media objects
- **Hands-on conservation treatments:** surface cleaning, tear repair, tape removal, flattening, consolidation and all book related treatments
- **Bespoke archival housing:** design and production of conservation-grade boxes, folders, mounts and enclosures to support long-term storage and reduce handling risk
- **Support for digitisation projects:** object preparation, conservation treatment and handling guidance
- **Preparation for display and exhibition:** mounting, framing and object supports
- **Preventive conservation advice:** handling practices, storage solutions, environmental conditions, lighting and integrated pest management



## Secure Onsite Storage

Both the Conservation and Photography studios are secure spaces, each containing separate, independently lockable areas. Both are climate monitored and fitted with Denco-Multi air control systems should climactic conditions need to be adjusted.

The Museum also has a highly secure onsite climate-controlled repository, which features an alarm system, reinforced steel door and a separate vault within this area. Loan items are insured for a value of up to £250K per item up to a collective total of £15 million. Items or projects of higher value can be insured through temporary policy extensions.

## Peace of Mind

The Postal Museum is an accredited independent museum, it is the custodian of 500 years of postal history and its archive is on the UNESCO memory of the World UK Register. We handle, conserve and photograph some of our country's most important cultural heritage every day. As well as our heritage services teams, our organisation includes specialists in IT, intellectual property, digital preservation, archive management, marketing and curatorial practices. This professional diversity allows us to bring a depth of experience to our commercial offerings that non-institutional service providers are unable to match.



**The Postal Museum**  
15-20 Phoenix Place  
London  
WC1X 0DA

**[postalmuseum.org](http://postalmuseum.org)**

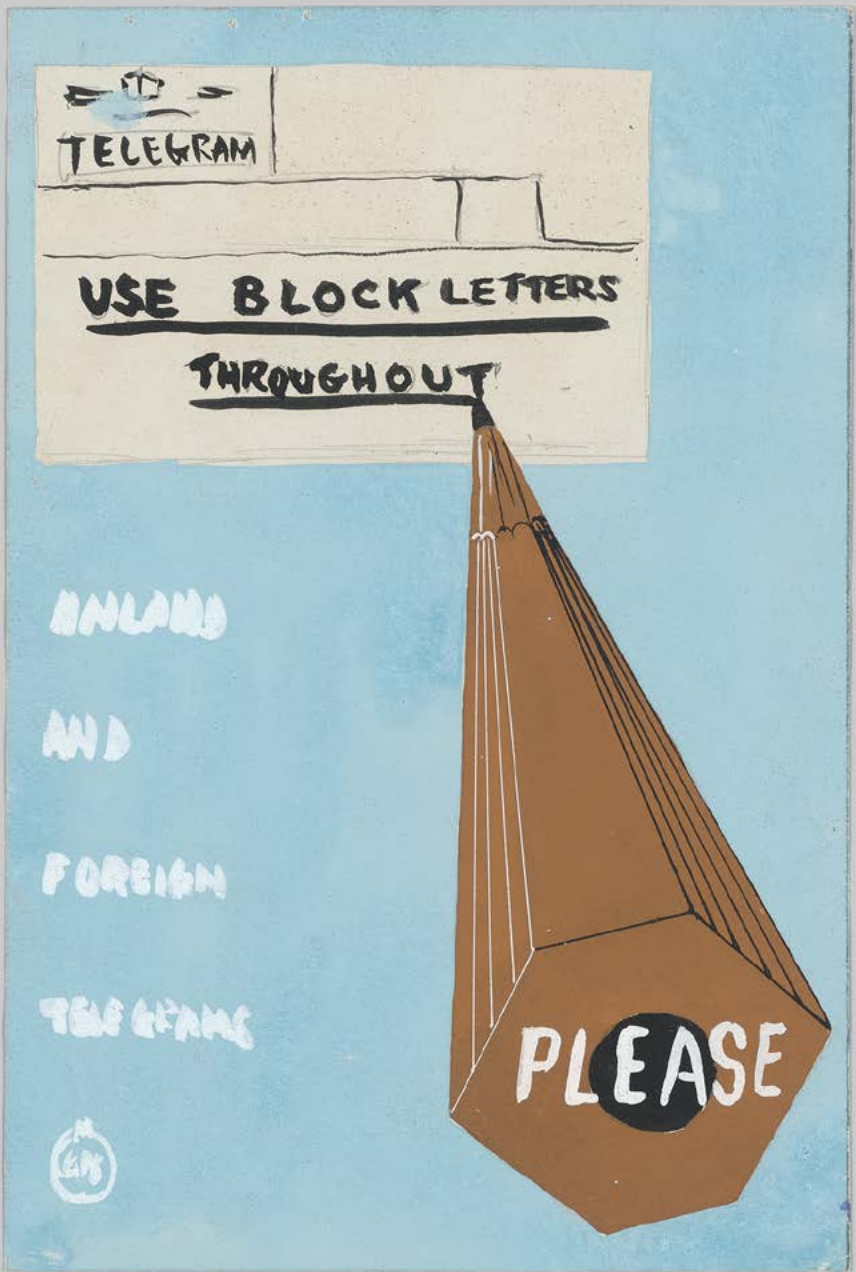
0300 030 0700 | [studio@postalmuseum.org](mailto:studio@postalmuseum.org)



Wooden carved model telegram delivery boy with a long coat and cap.



Candlestick telephone with dial for automatic exchange.



Original artwork for a 1950's telegram service poster by unknown artist.



1976 centenary of the first telephone call by Alexander Graham Bell stamp issue, designed by Philip Sharland.

UNGER



# Work as a Team



Internal 1960's poster promoting teamwork by Hans Unger.

HUMAN LADDER FOR TELEPHONE



OFFICIAL PHOTOGRAPH  
CROWN COPYRIGHT RESERVED

PUBLISHED BY  
THE DAILY MAIL

Hand-coloured lantern slide of soldiers in WWI.



Demonstration telephone used for educational purposes.

*Tele. front cover*



*8 1/2 x 7 1/2"*

*Fl 6573-*

Original artwork for a 1957 issue wedding telegram by Elizabeth Corsellis.