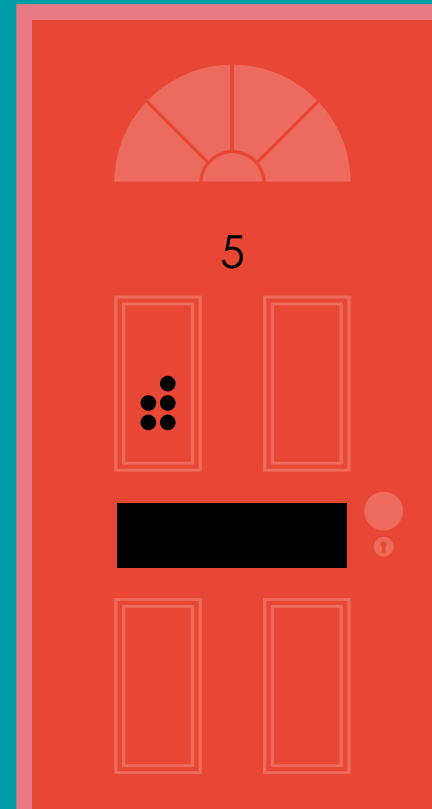


Sorting Office Maths Challenge

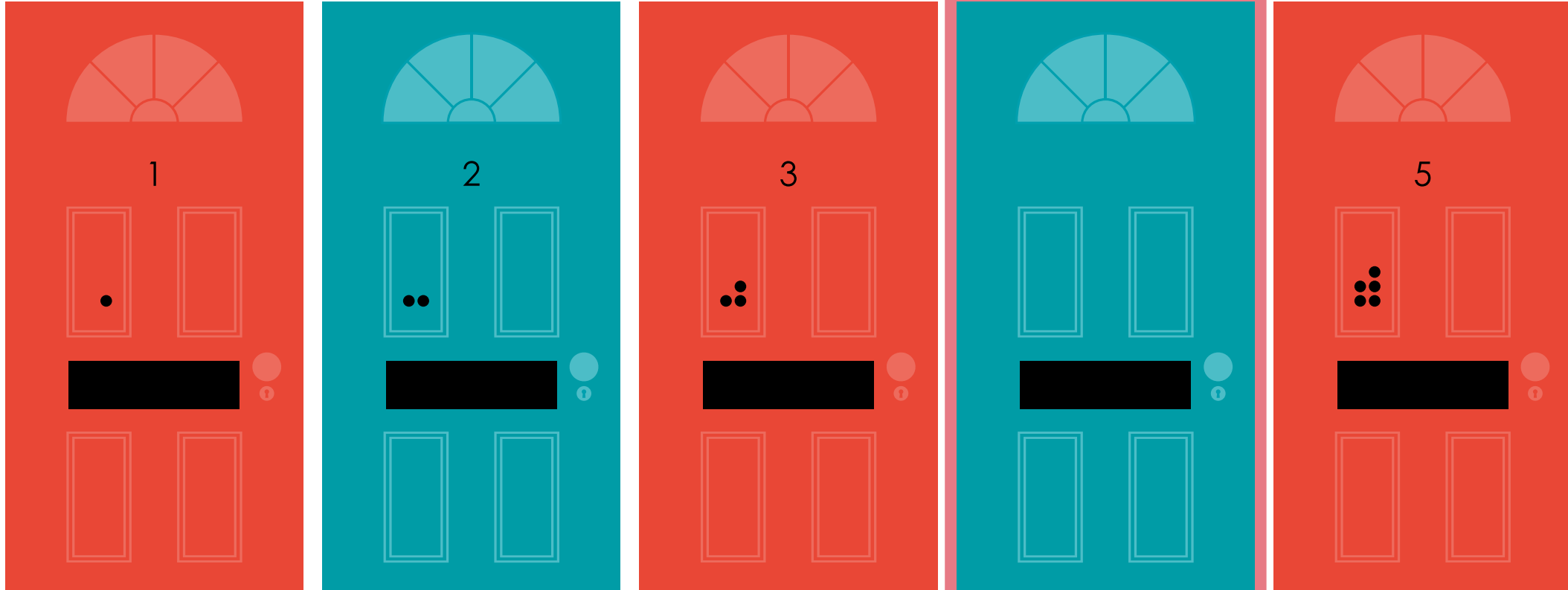
Sequence the Streets



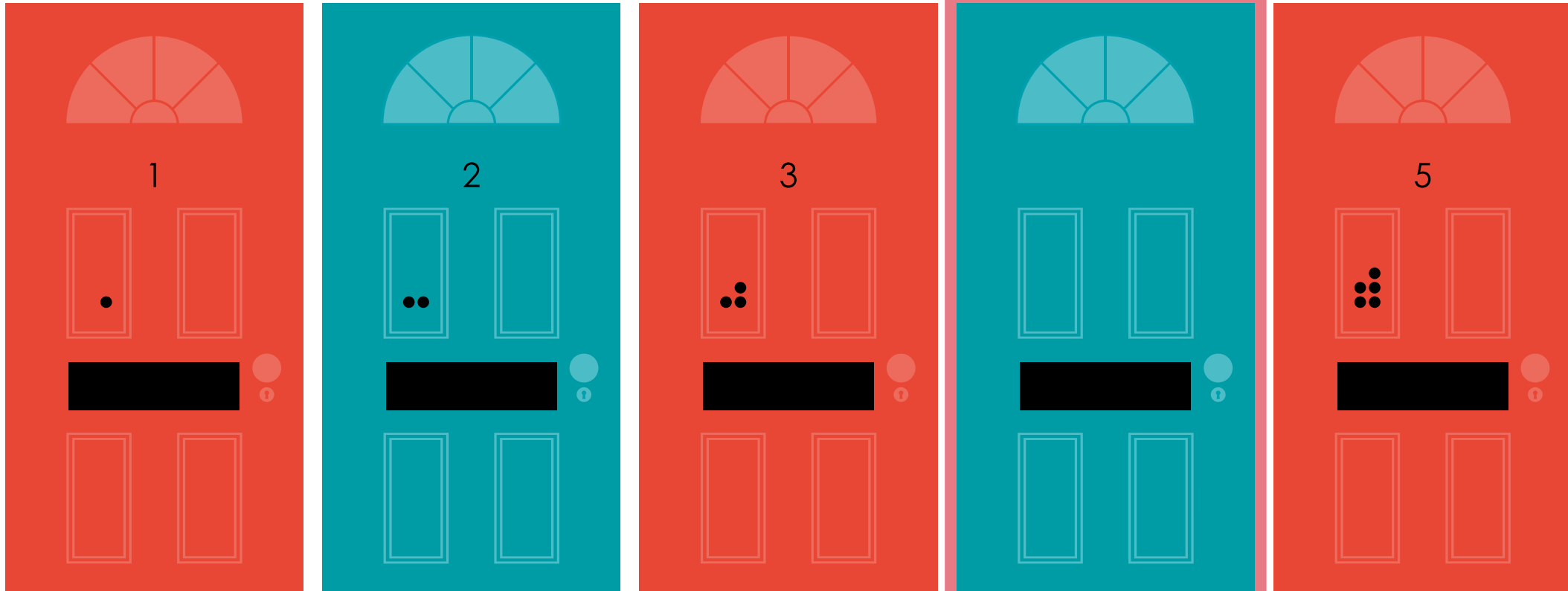
Supported by



What is the missing door number?

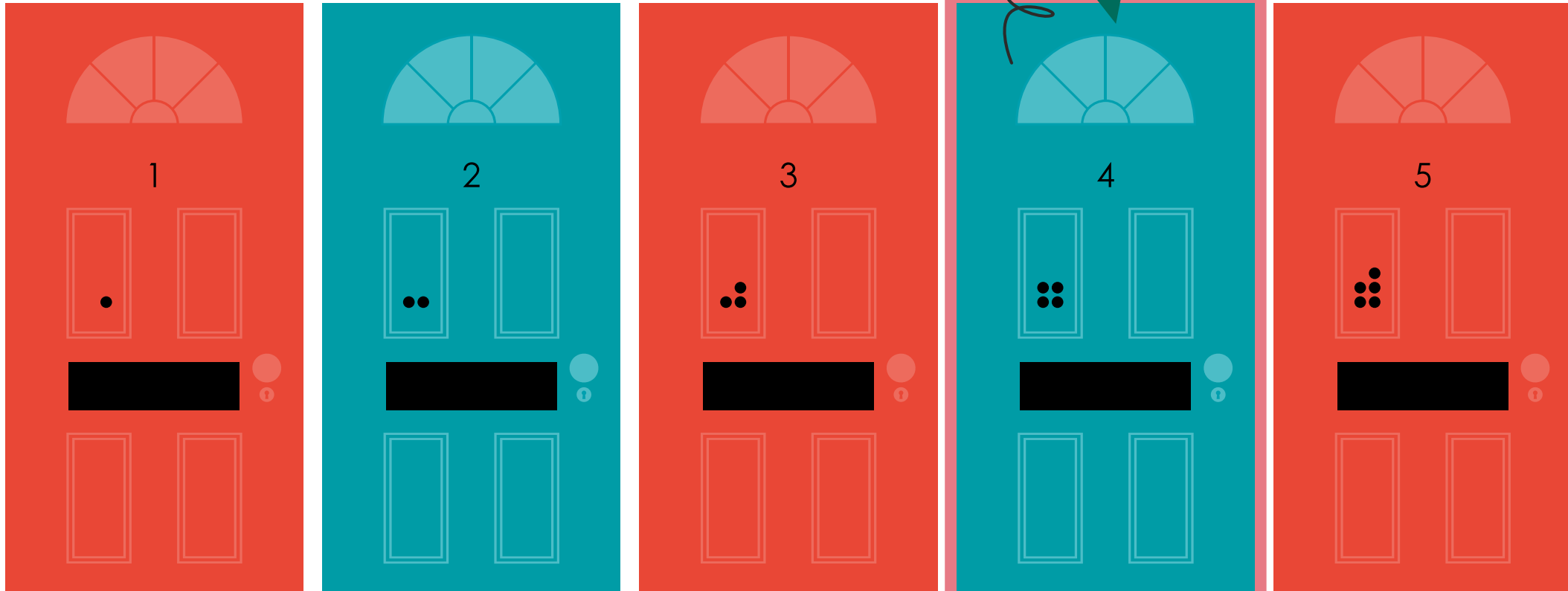
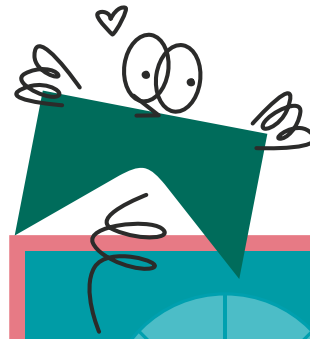


Oops!



Not quite right...

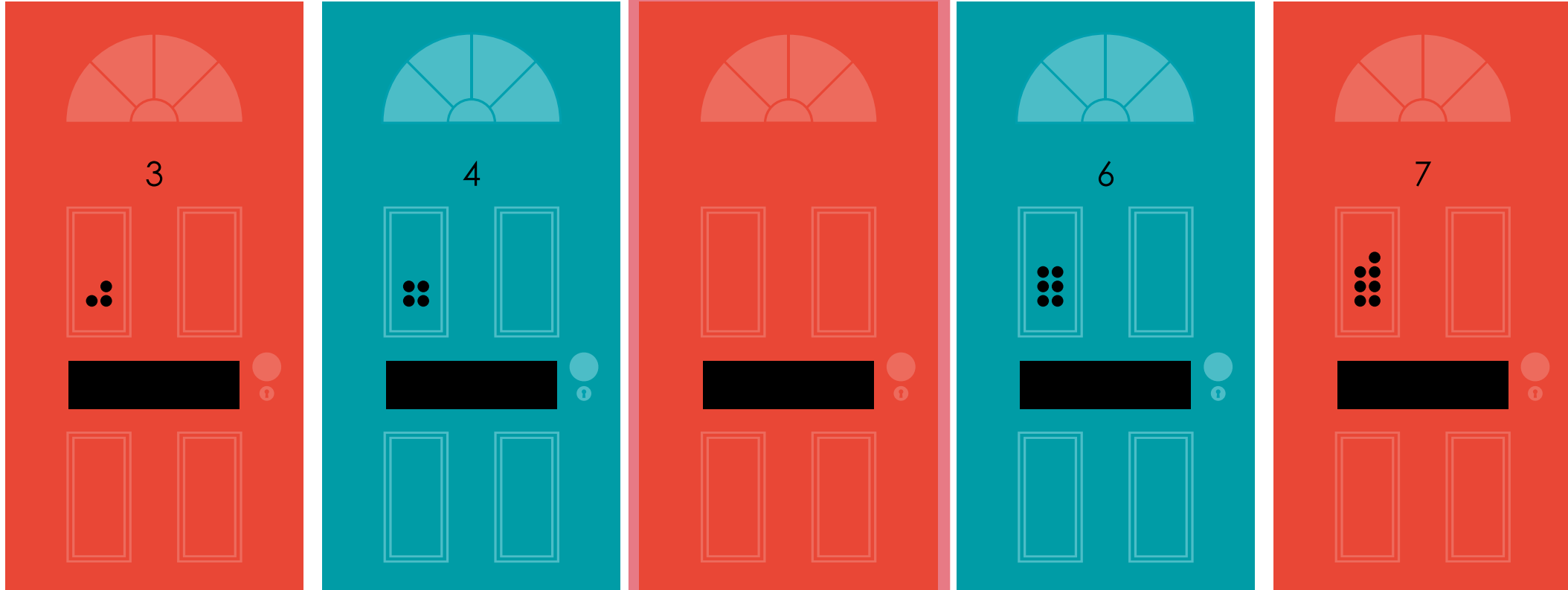
Well done!



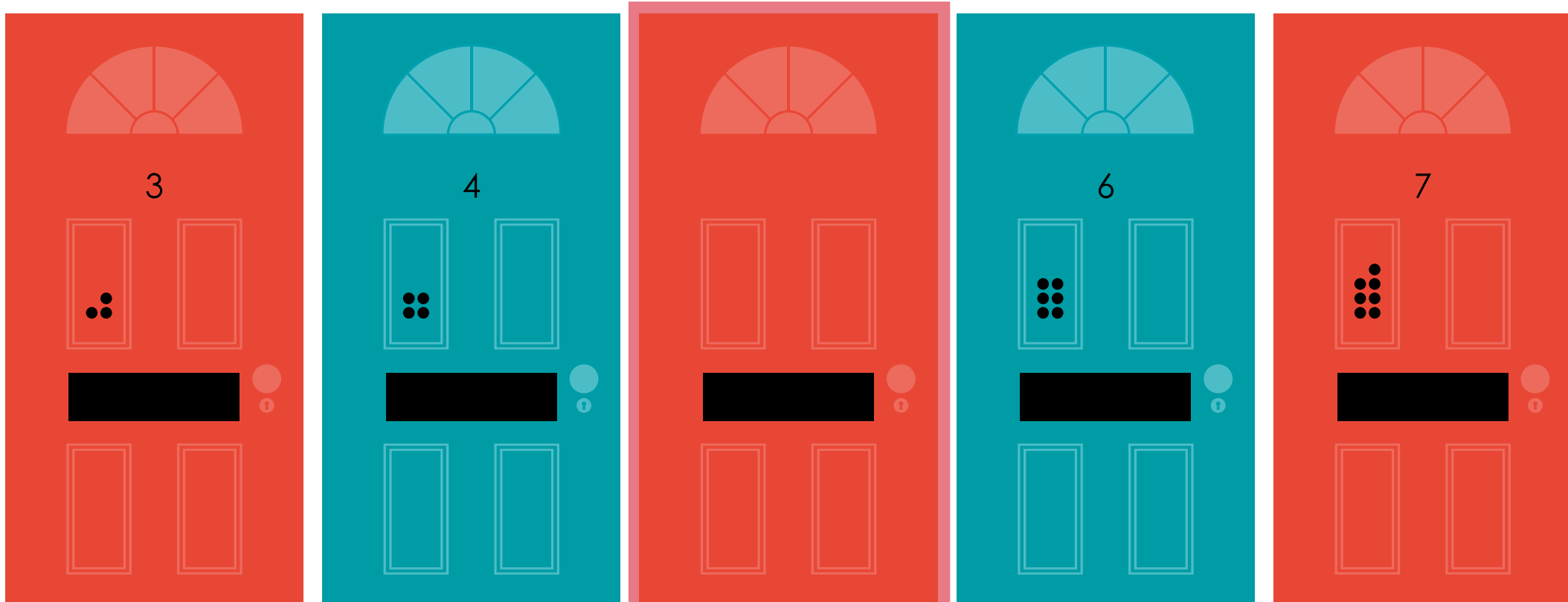
Yes, the missing
number was four

4

What is the missing door number?

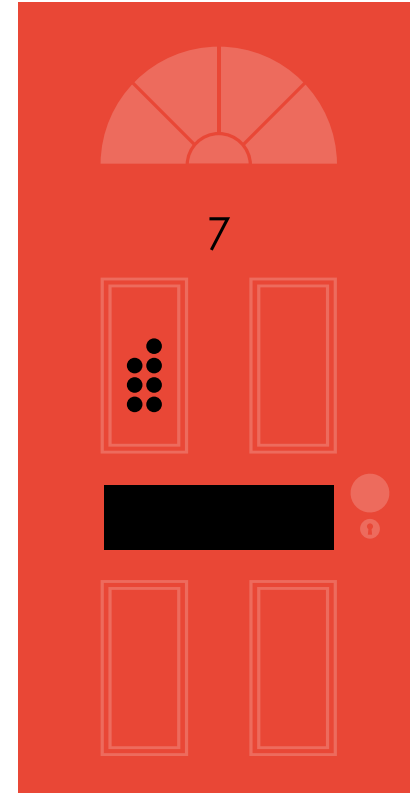
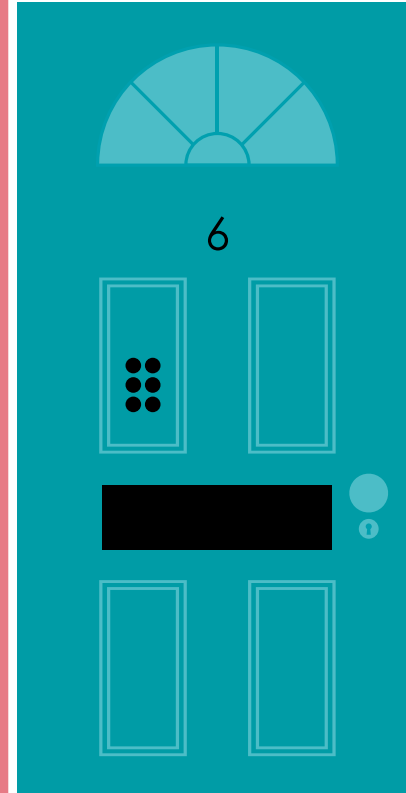
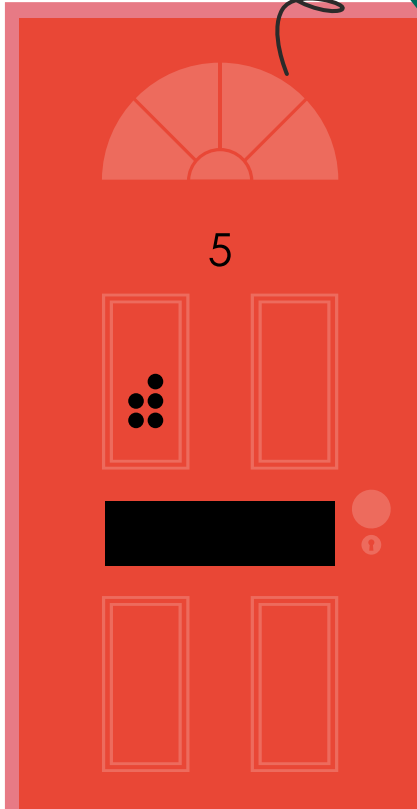
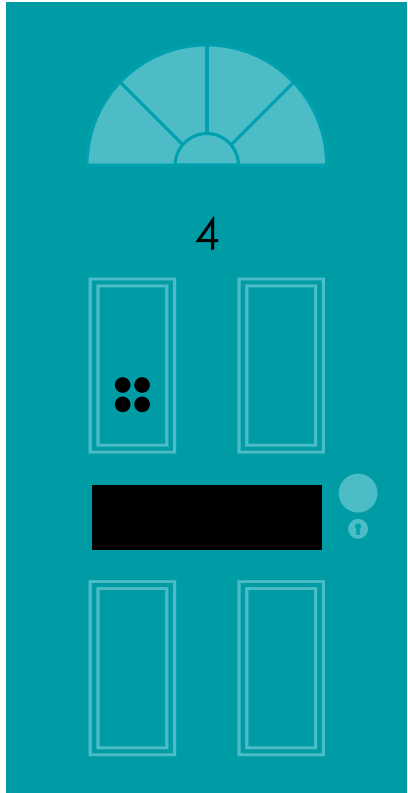
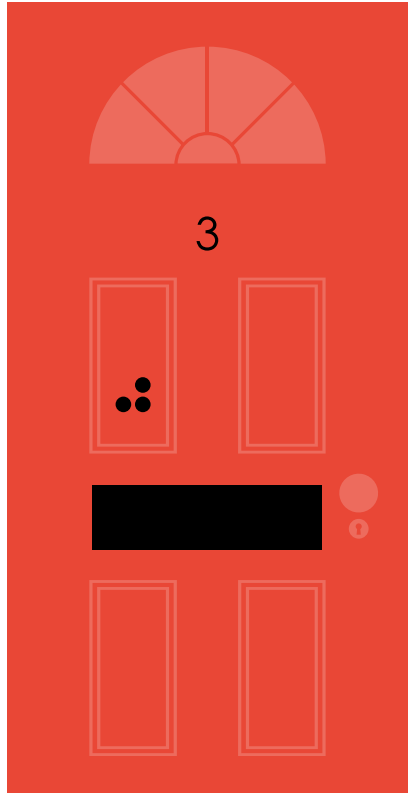
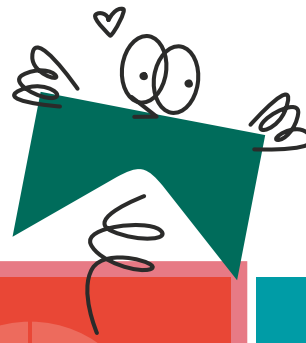


Oops!



Not quite right...

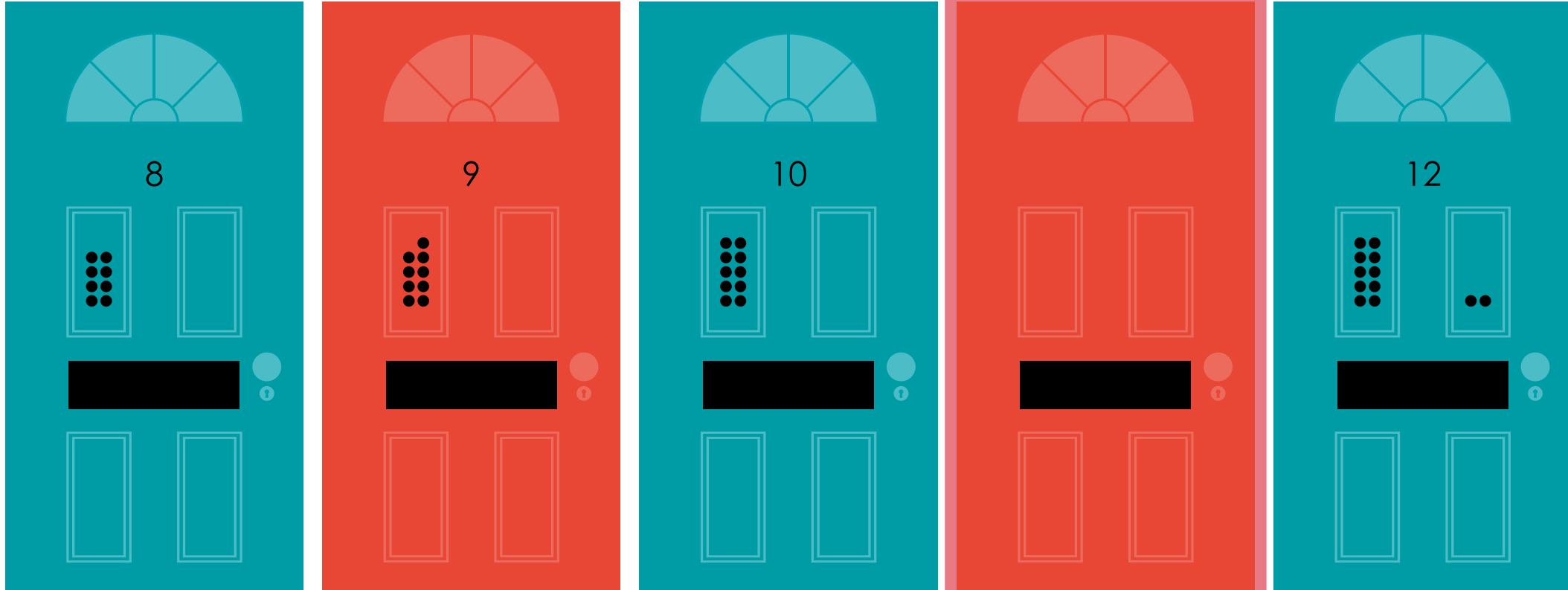
Well done!



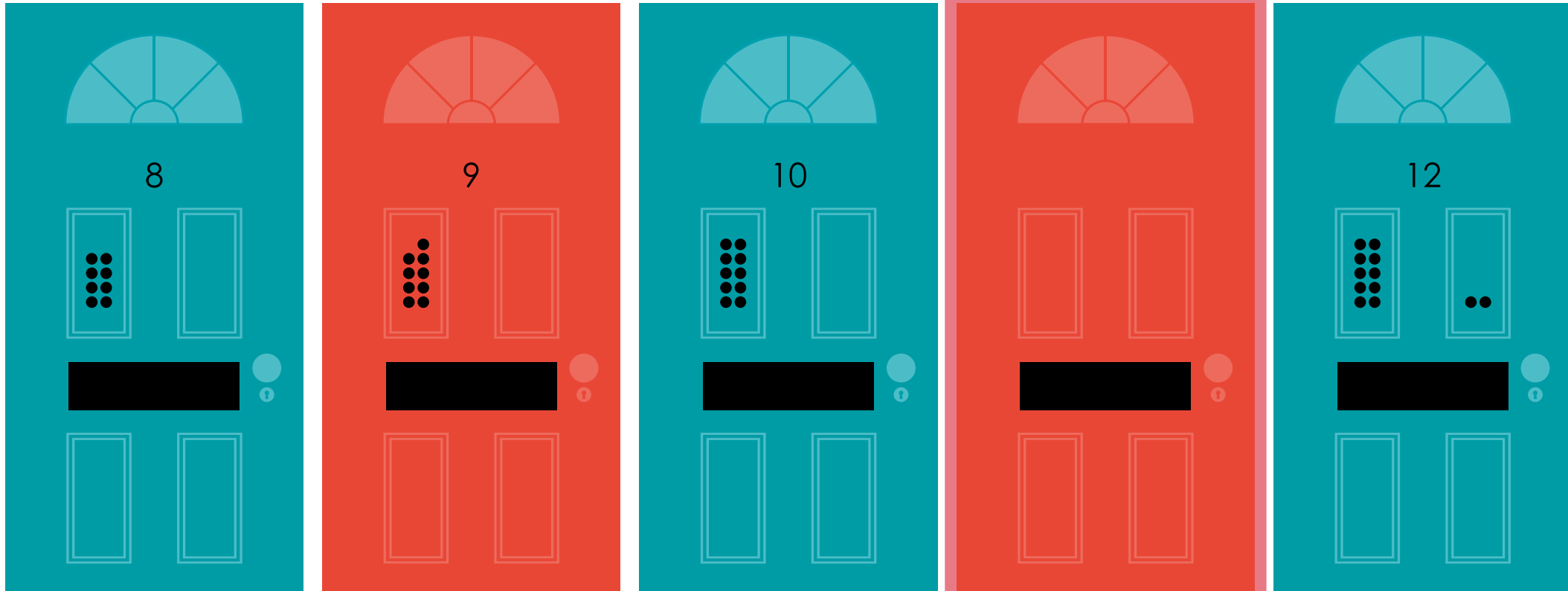
Yes, the missing
number was five

5 

What is the missing door number?

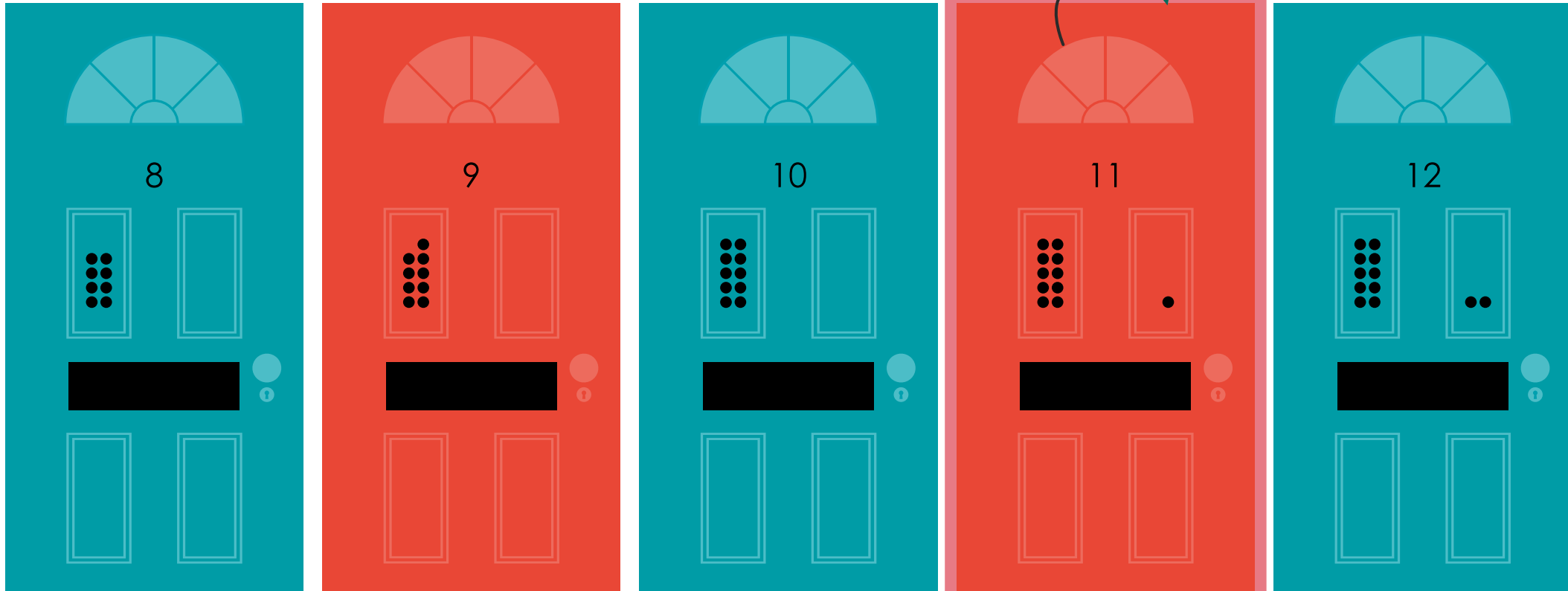
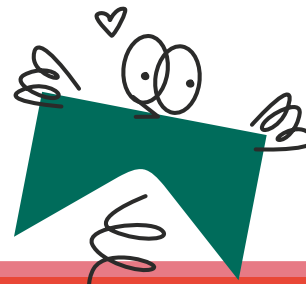


Oops!



Not quite right...

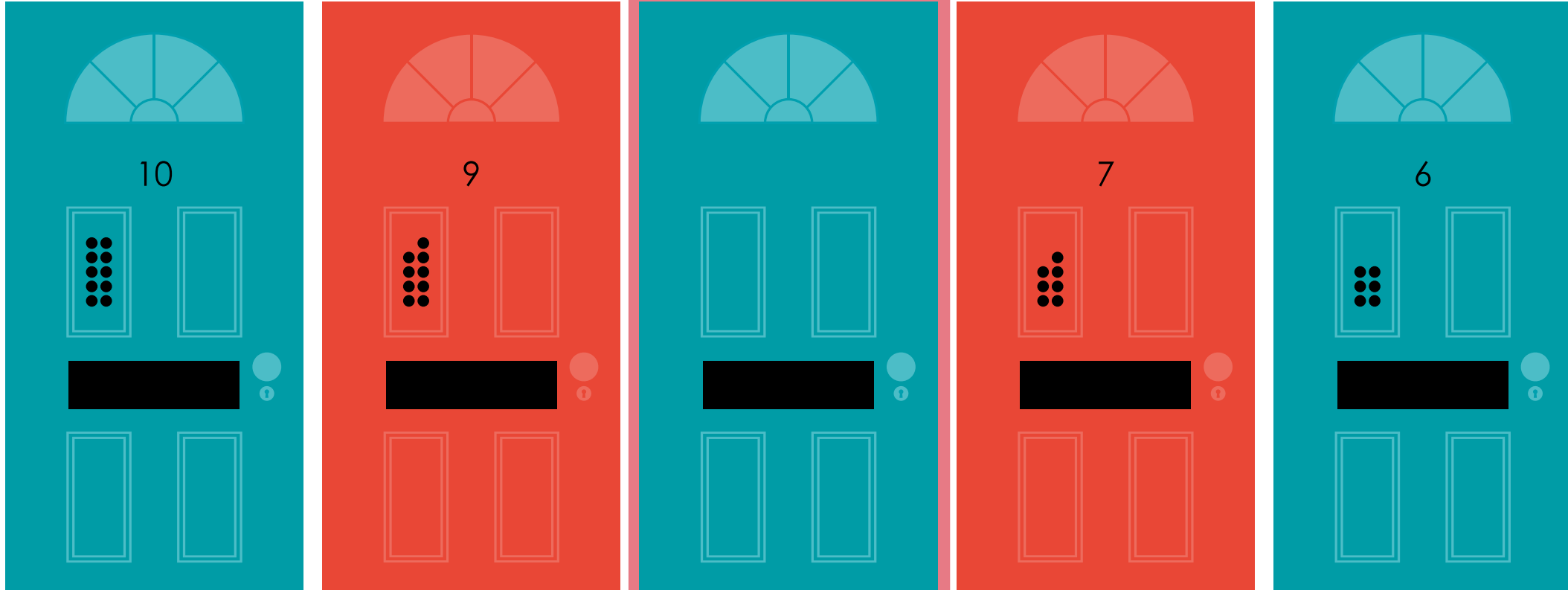
Well done!



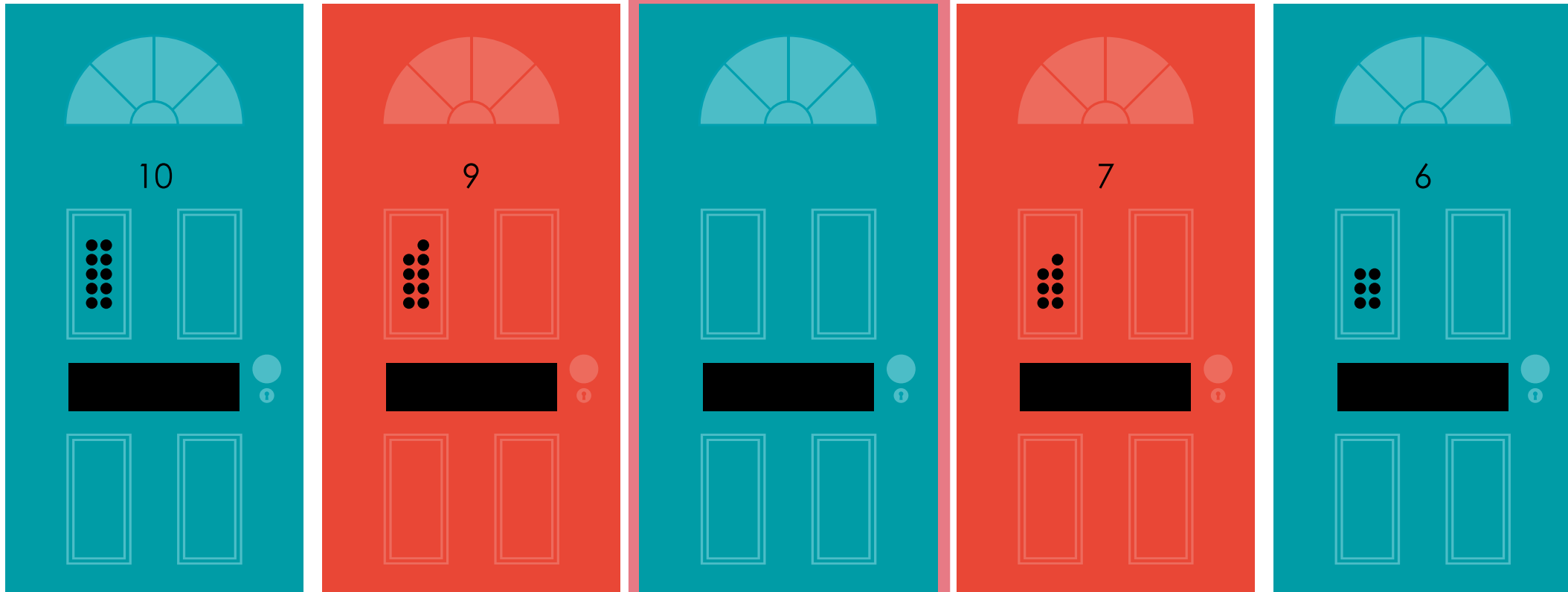
Yes, the missing
number was eleven

11

What is the missing door number?

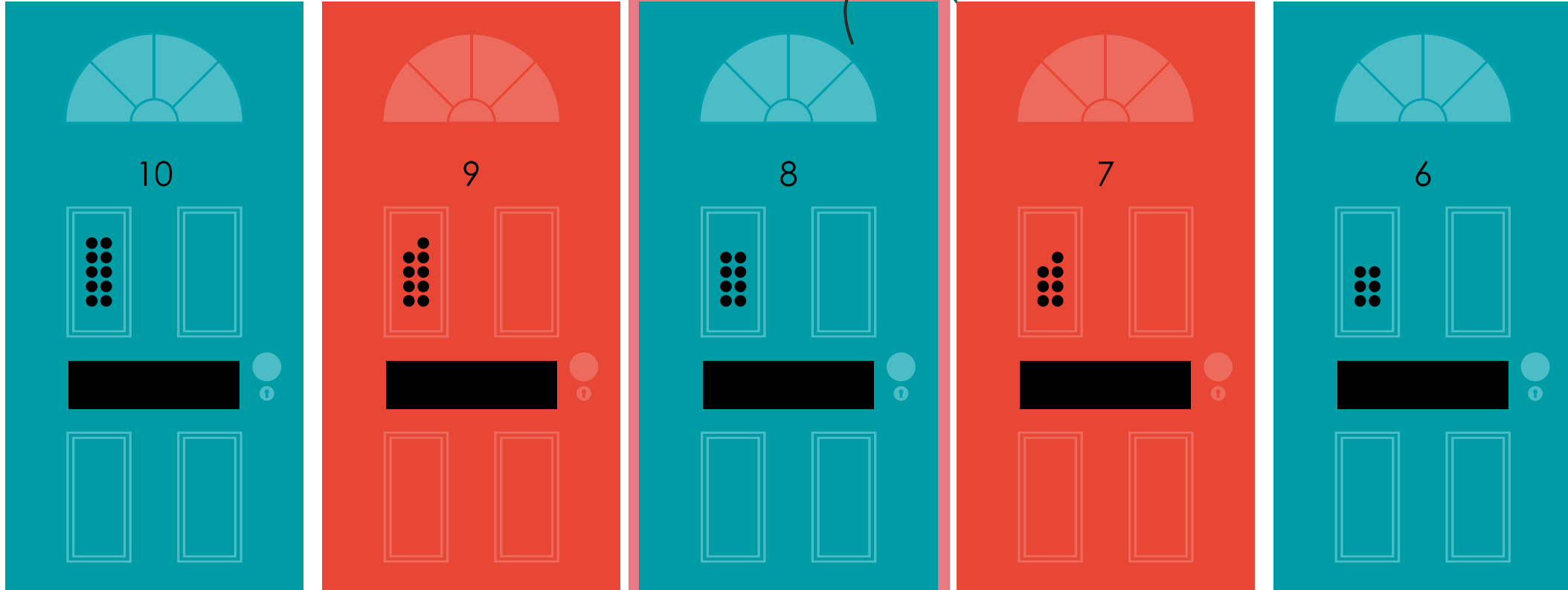
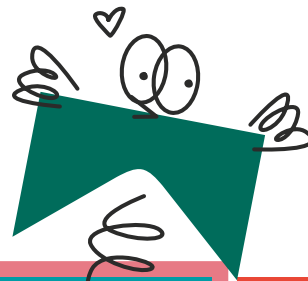


Oops!



Not quite right...

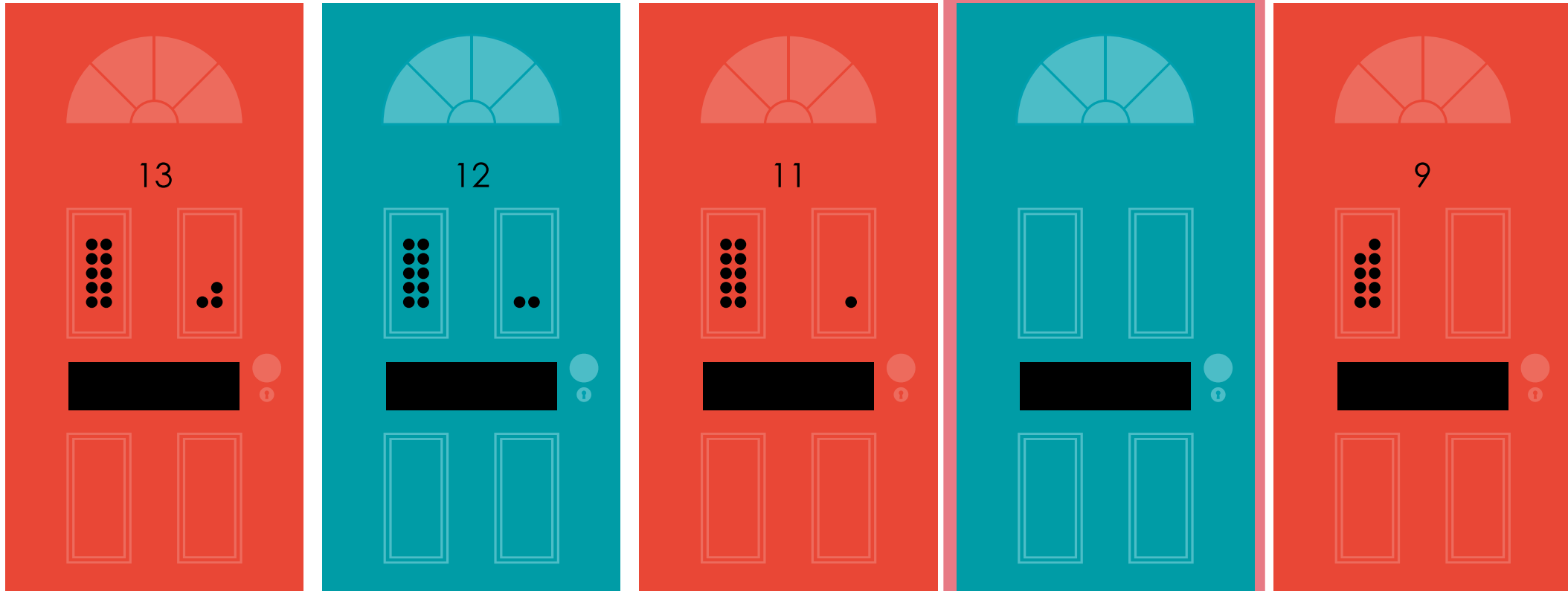
Well done!



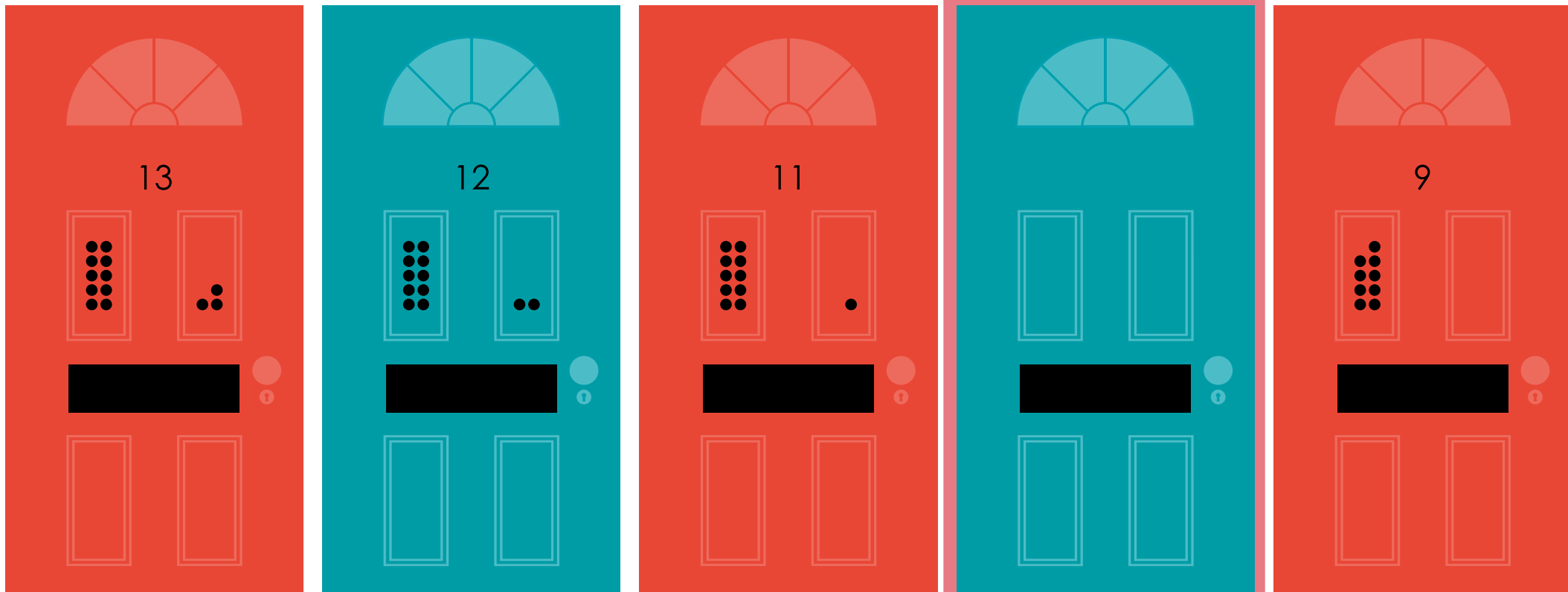
Yes, the missing
number was eight

8

What is the missing door number?

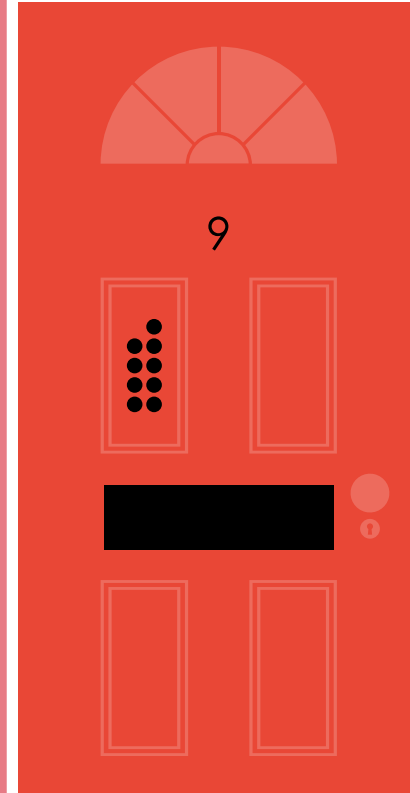
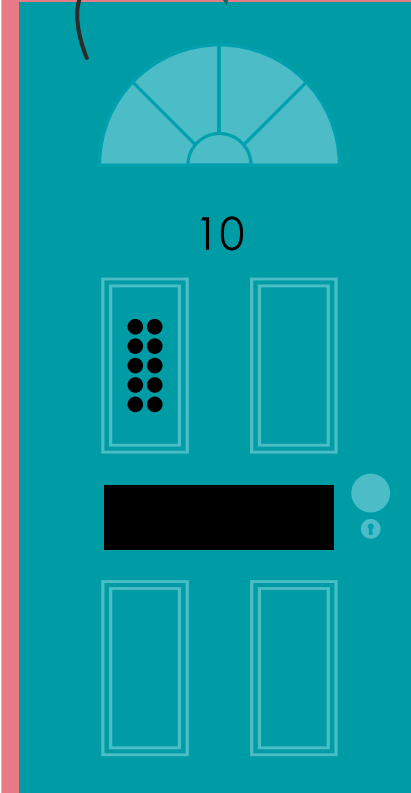
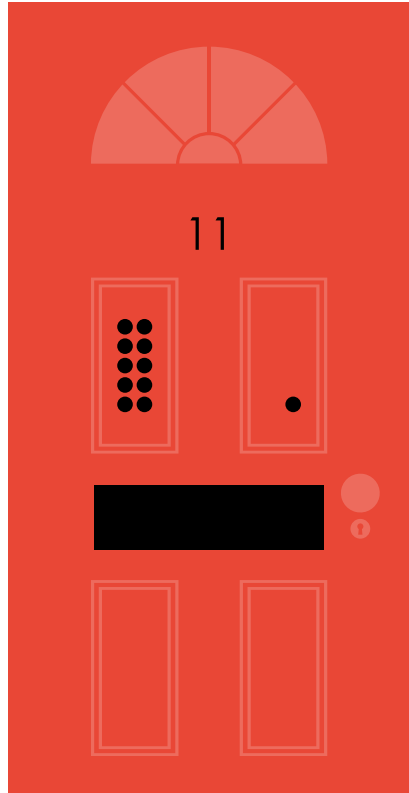
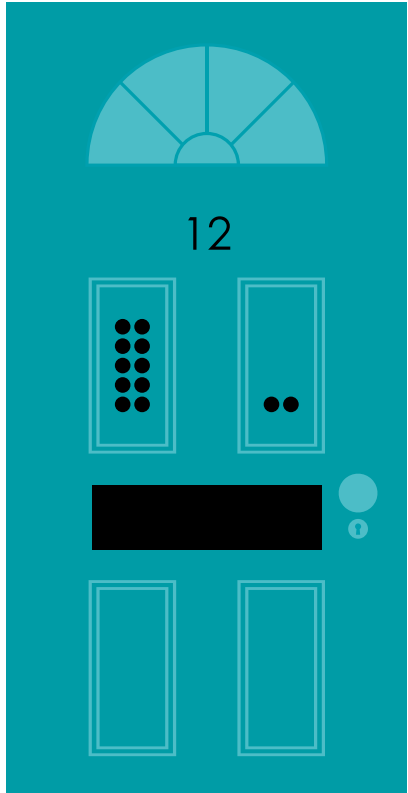
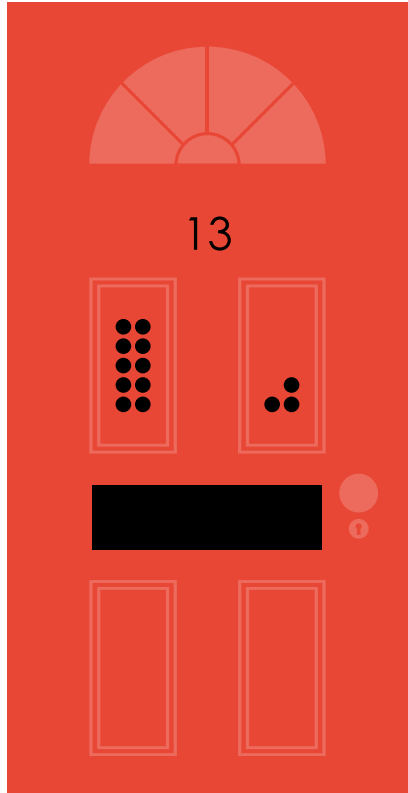
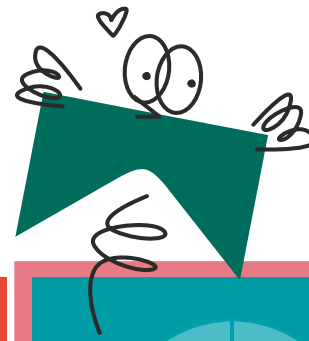


Oops!



Not quite right...

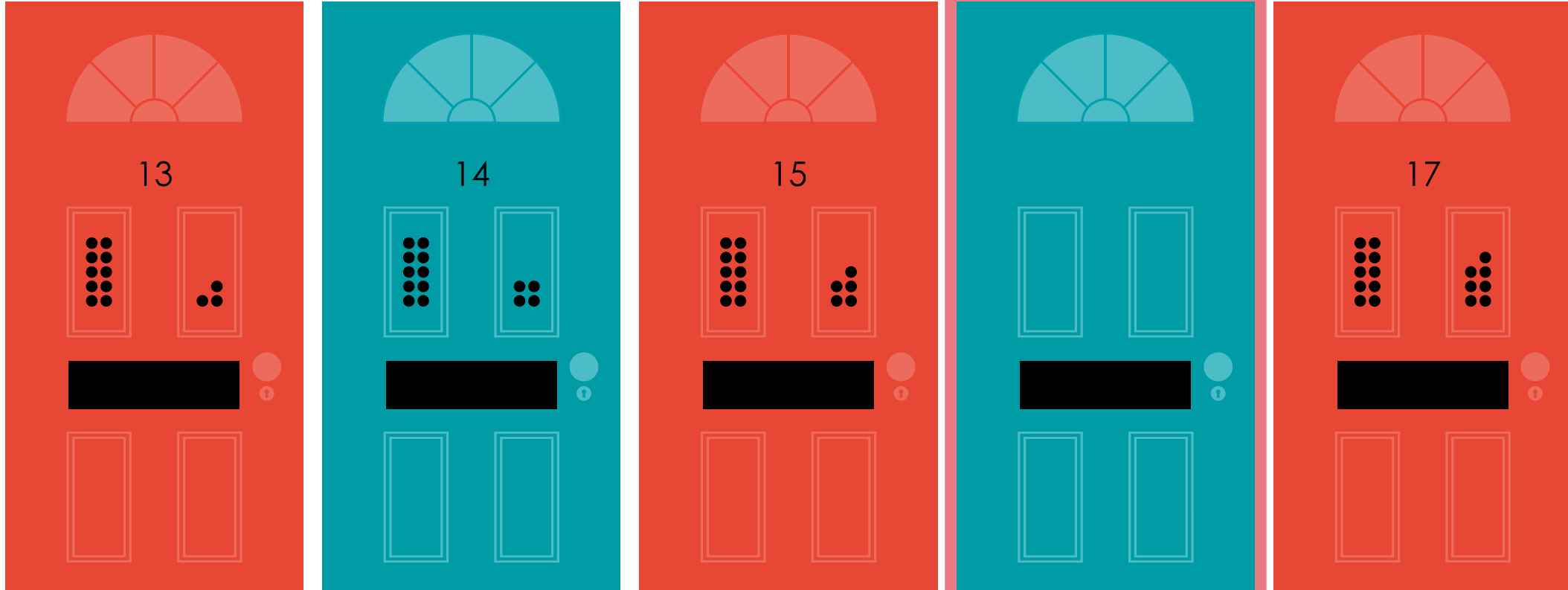
Well done!



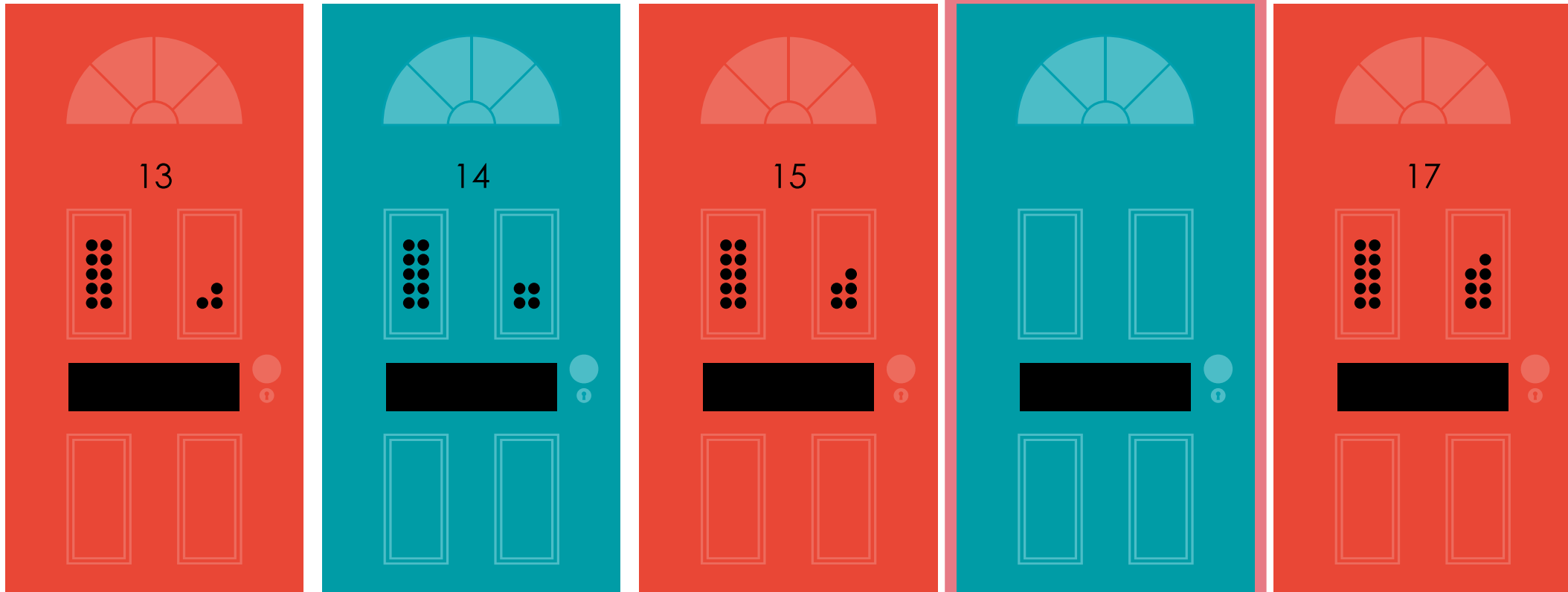
Yes, the missing
number was ten

10

What is the missing door number?

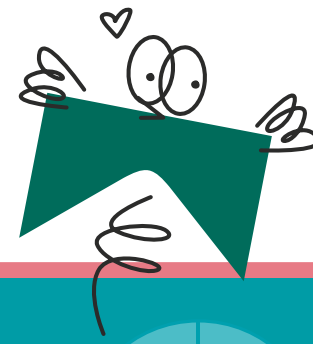


Oops!



Not quite right...

Well done!

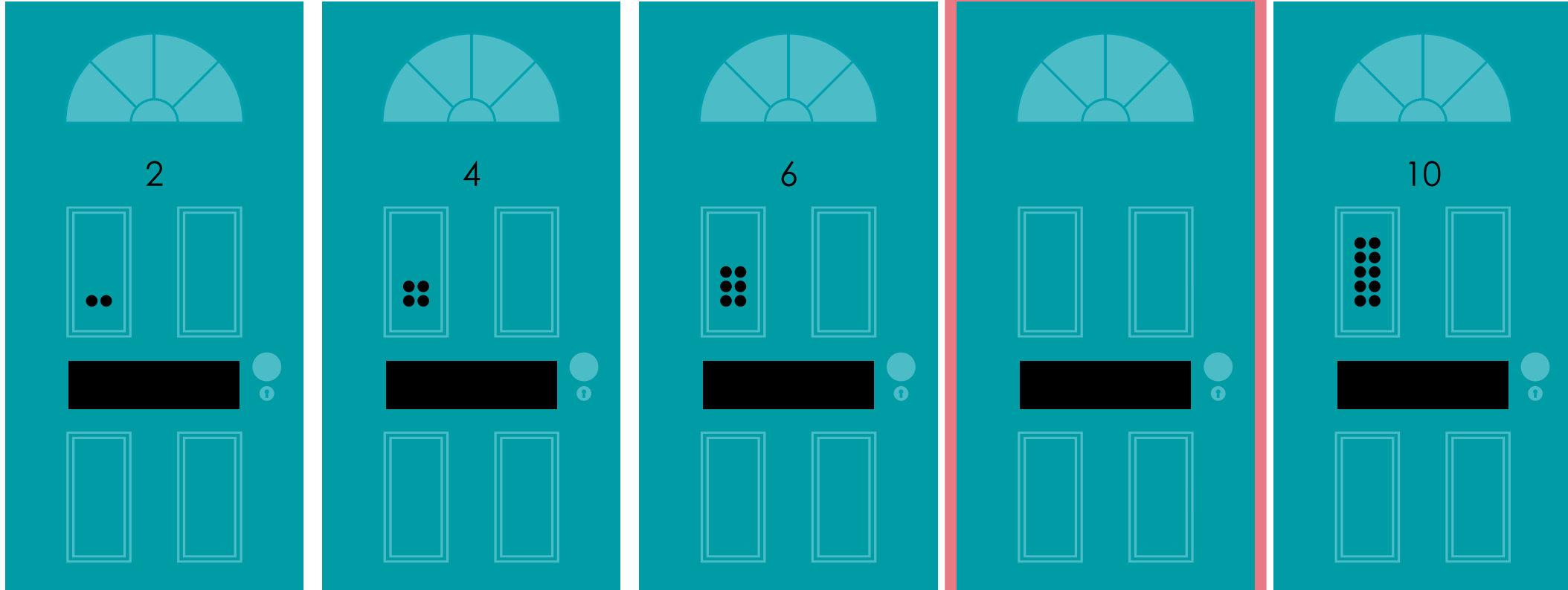


A sequence of five door panels. Each panel has a semi-circular window at the top, a number in the center, two rectangular windows below it, a black horizontal bar, and two vertical rectangular windows at the bottom. The panels are colored red, teal, red, teal, and red from left to right. The numbers are 13, 14, 15, 16, and 17. The dot patterns in the windows are: 13 (left: 6 dots, right: 3 dots), 14 (left: 6 dots, right: 4 dots), 15 (left: 6 dots, right: 5 dots), 16 (left: 6 dots, right: 6 dots), 17 (left: 6 dots, right: 7 dots). The teal panels (14 and 16) are highlighted with a pink border.

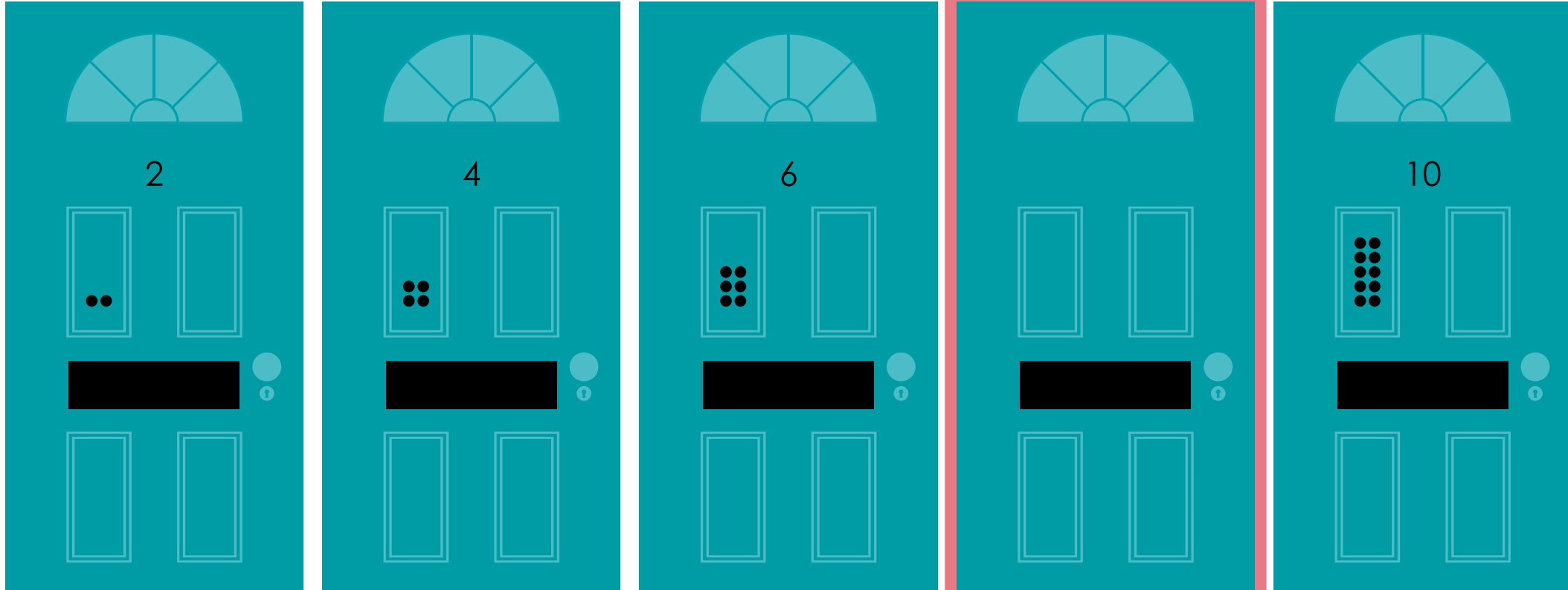
Yes, the missing
number was sixteen

16 

What is the missing door number?

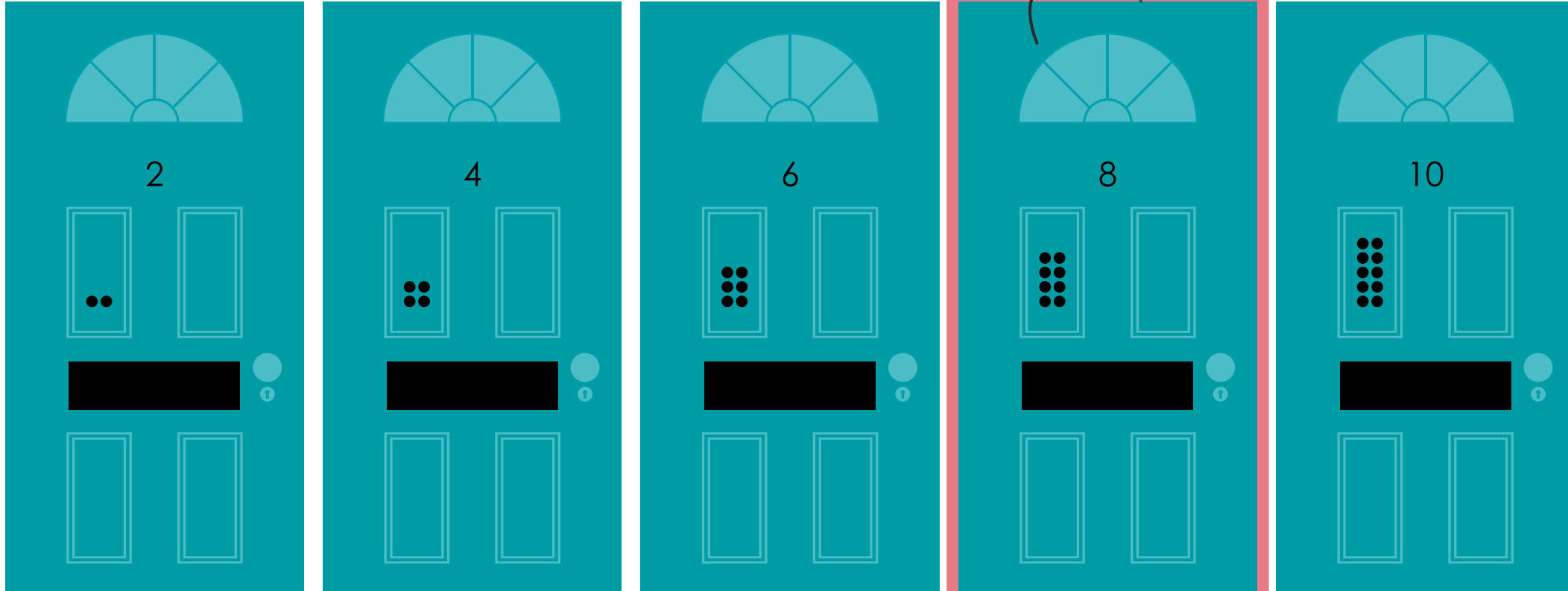
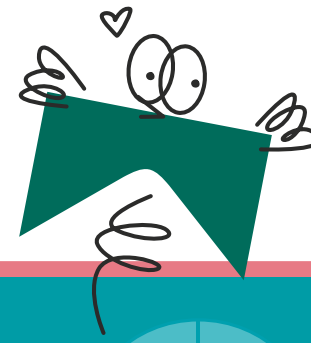


Oops!



Not quite right...

Well done!



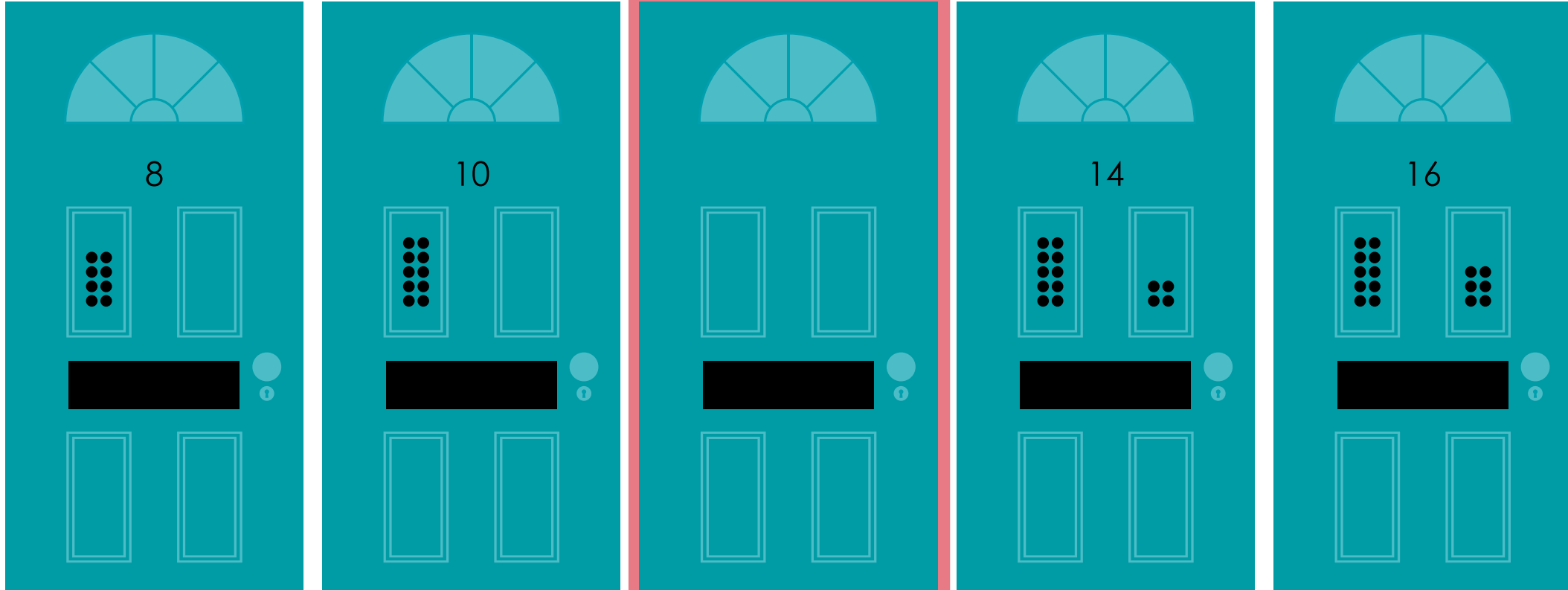
A sequence of five teal door panels, each with a semi-circular window at the top and a black mailbox slot at the bottom. The number of dots in the mailbox slot increases from 2 to 10 across the panels. The number '2', '4', '6', '8', and '10' is written above each panel. The panel with 8 dots is highlighted with a red border.

Panel	Number	Dot Pattern
1	2	Two dots
2	4	Four dots
3	6	Six dots
4	8	Eight dots
5	10	Ten dots

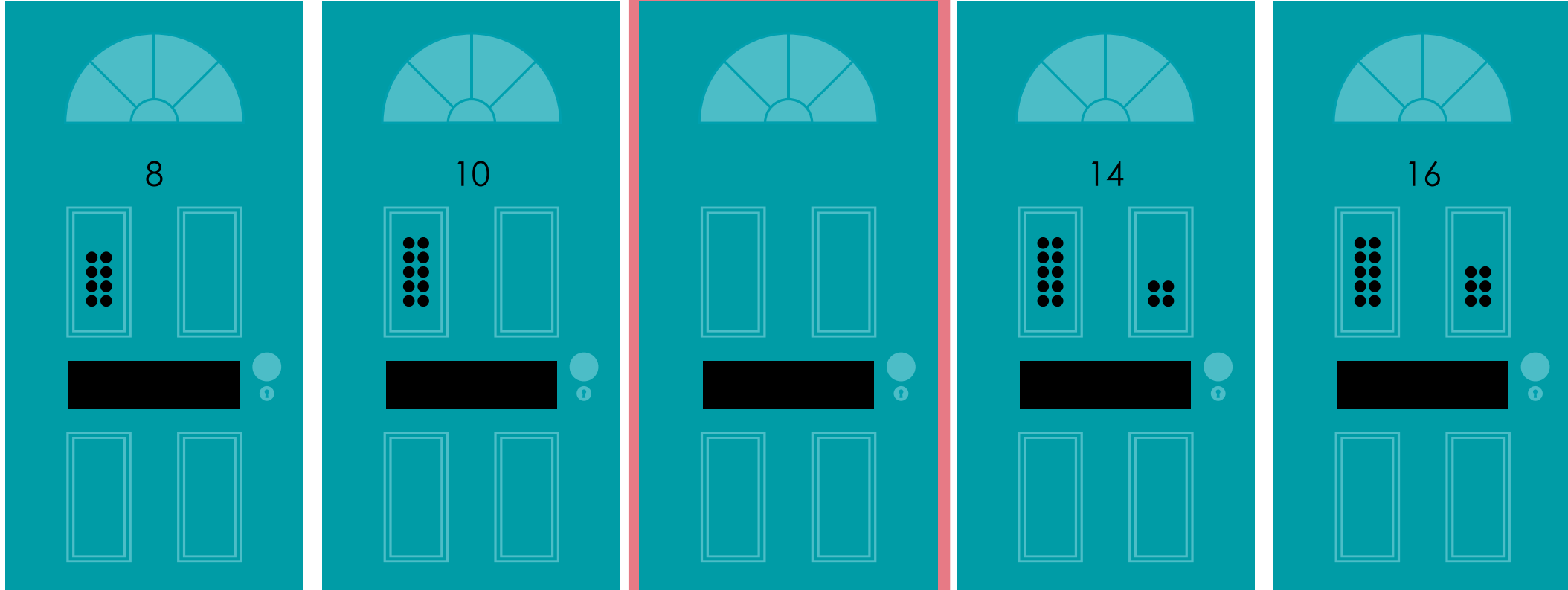
Yes, the missing
number was eight

8 

What is the missing door number?

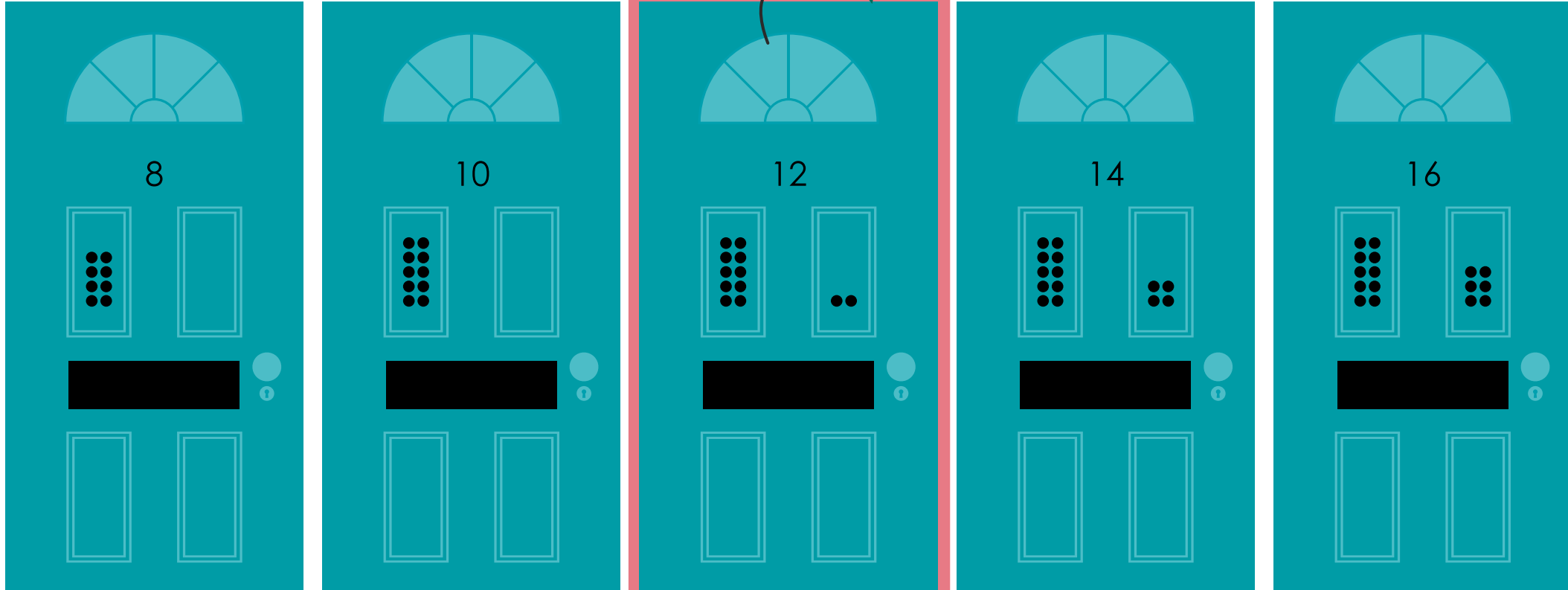
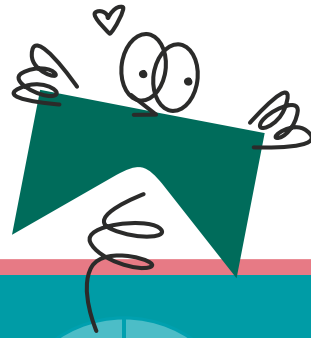


Oops!



Not quite right...

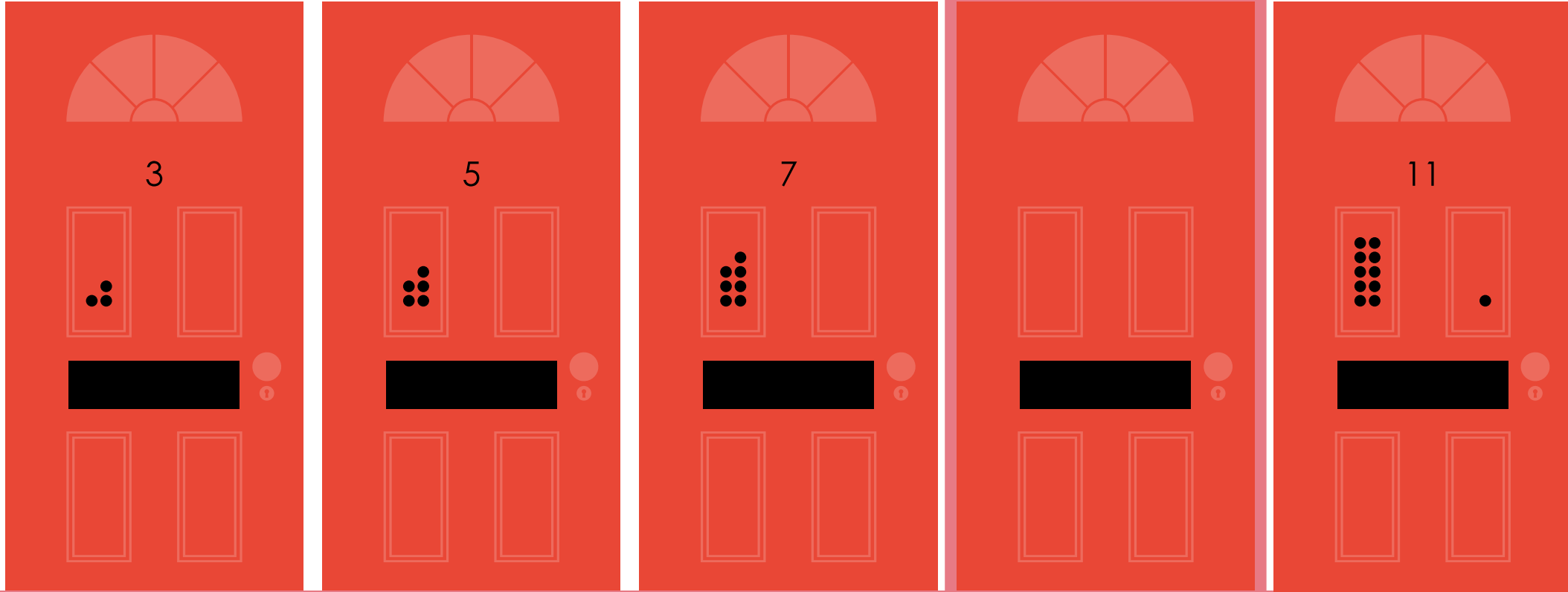
Well done!



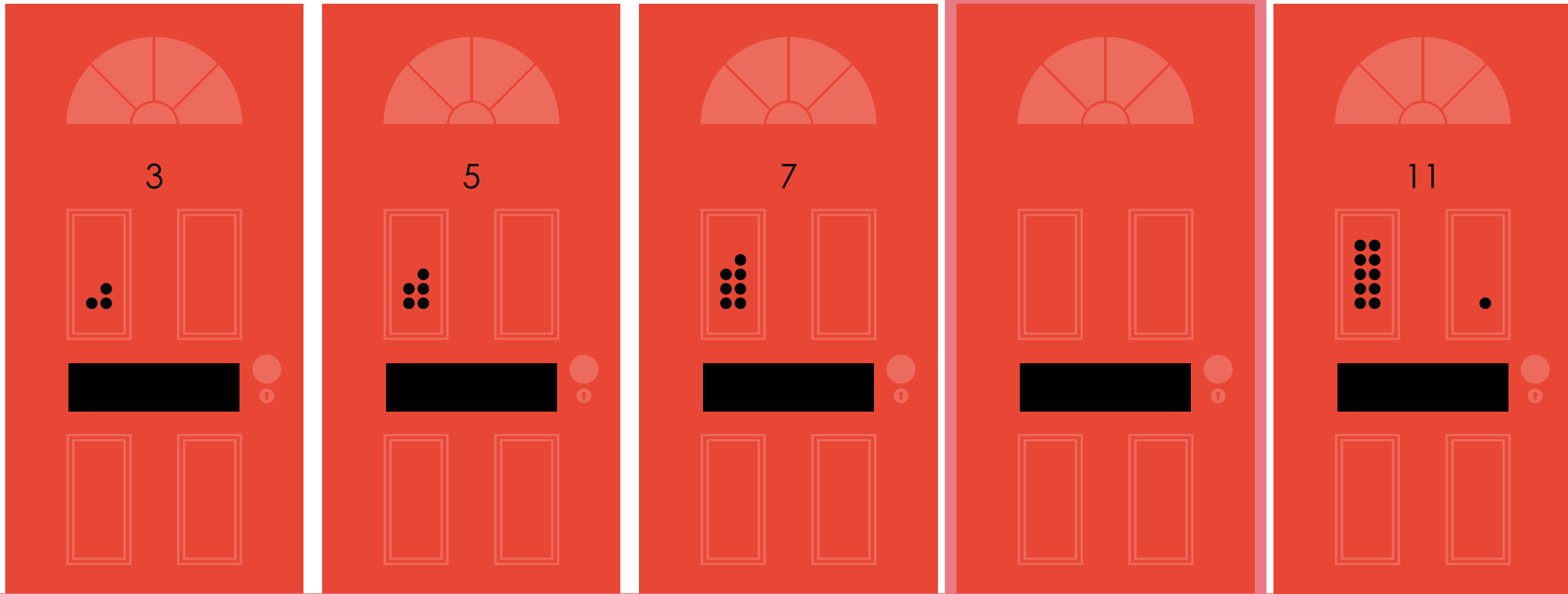
Yes, the missing
number was twelve

12 

What is the missing door number?

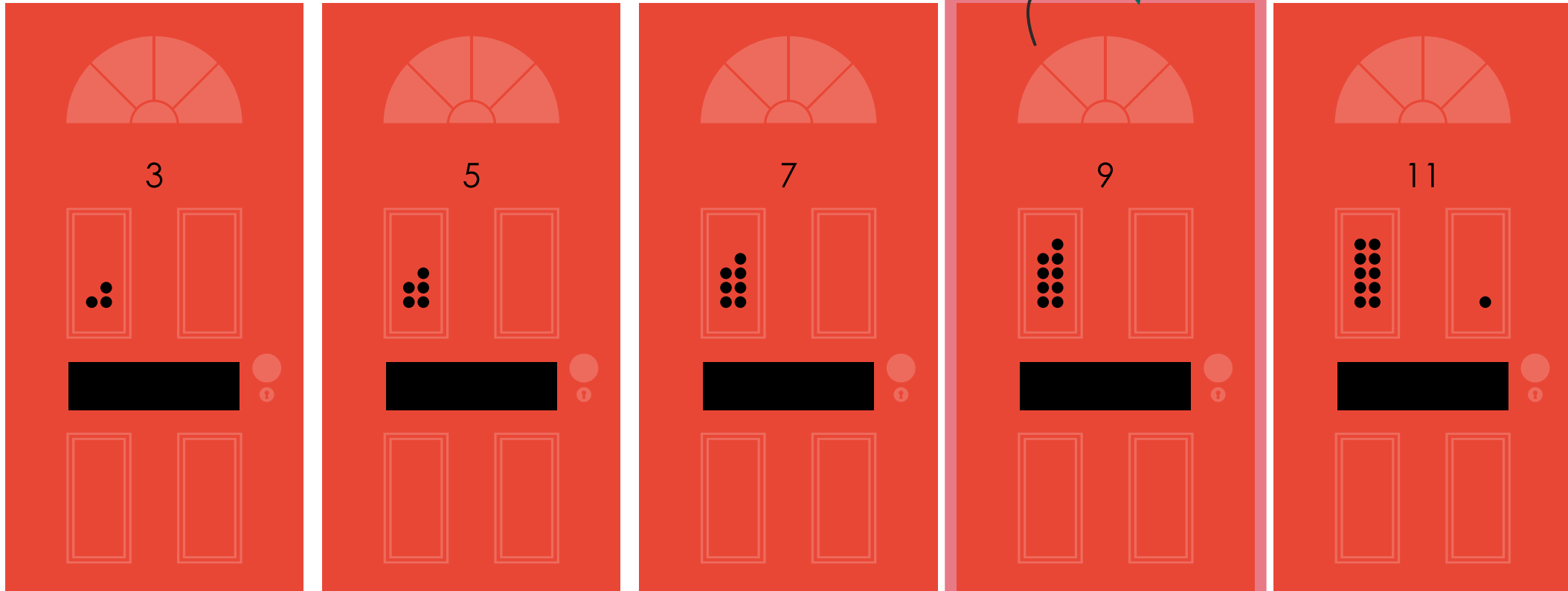
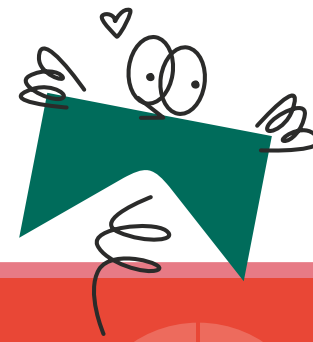


Oops!



Not quite right...

Well done!



3

5

7

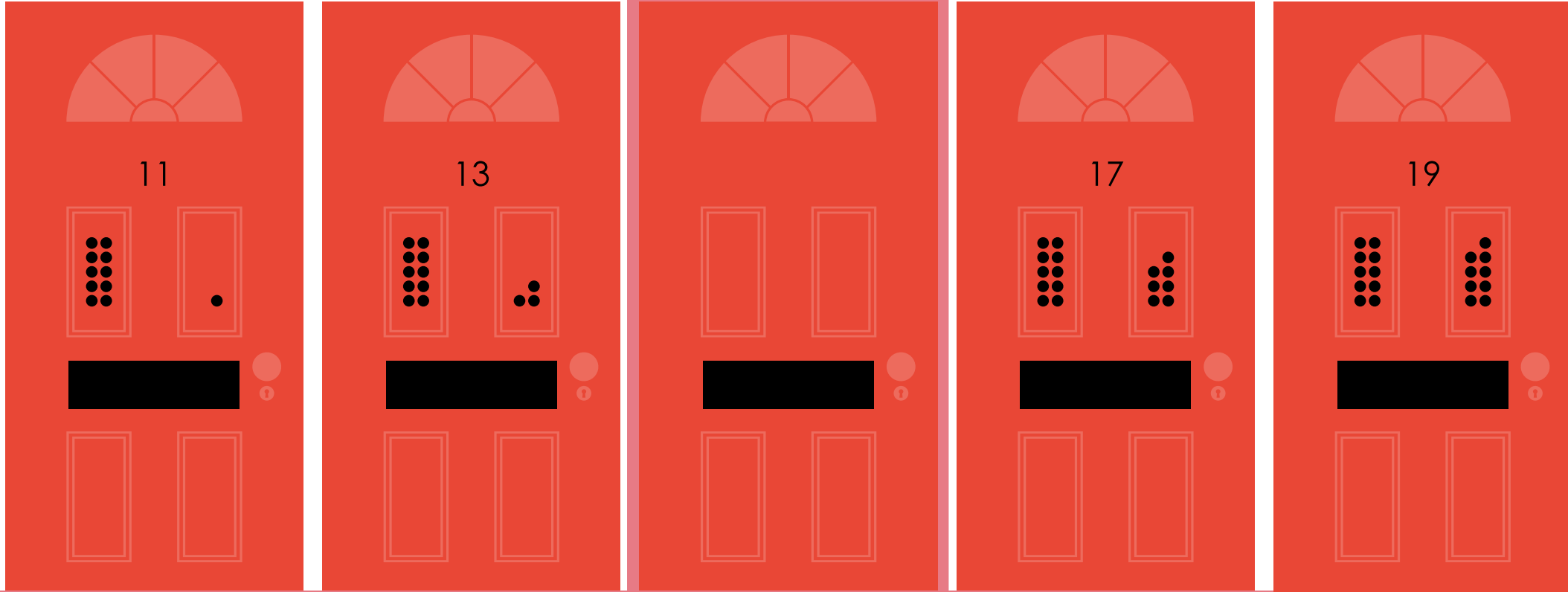
9

11

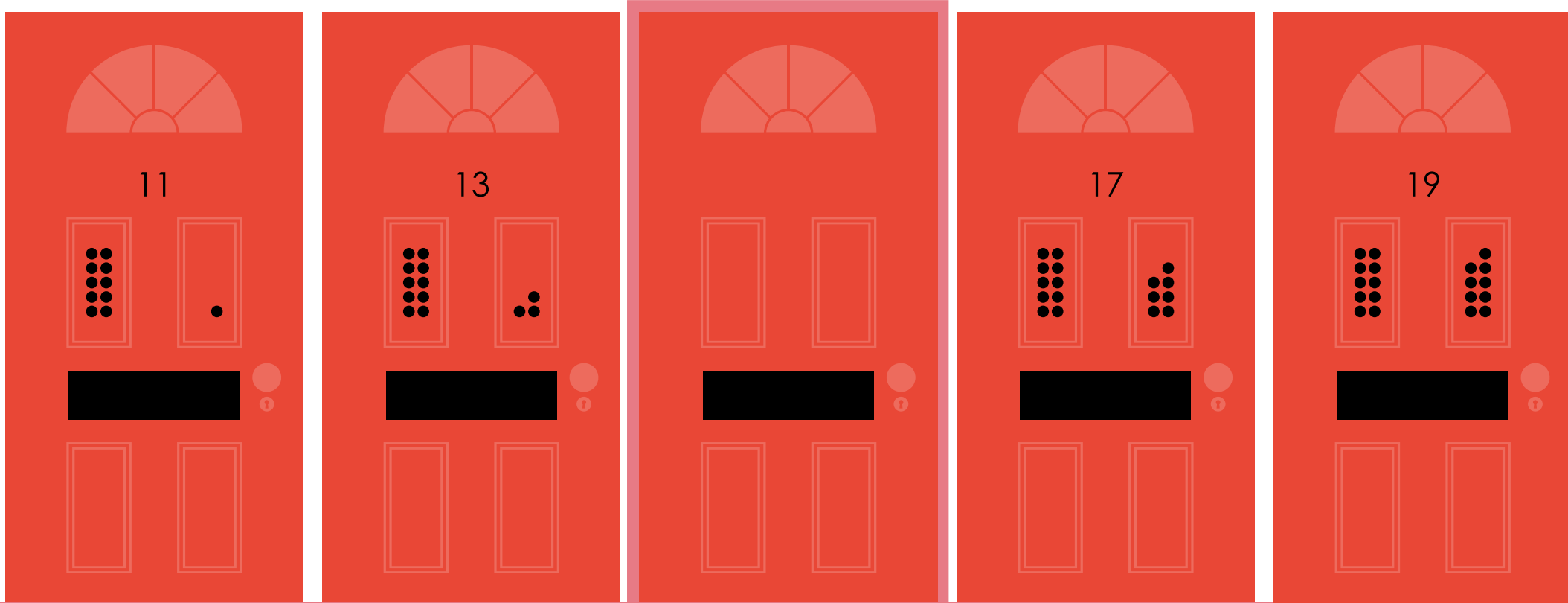
Yes, the missing
number was nine

9 

What is the missing door number?

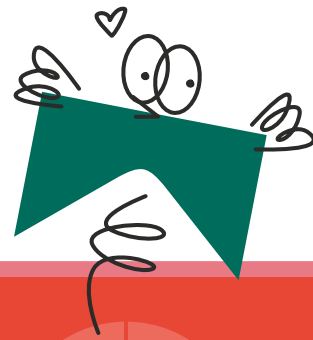


Oops!

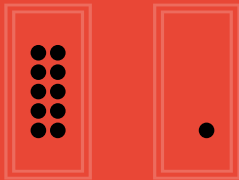


Not quite right...

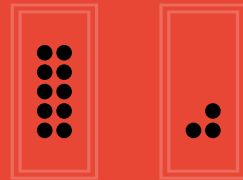
Well done!



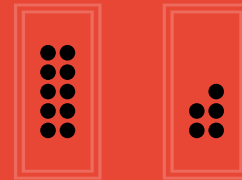
11



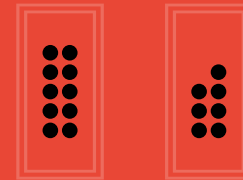
13



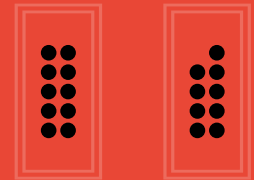
15



17



19

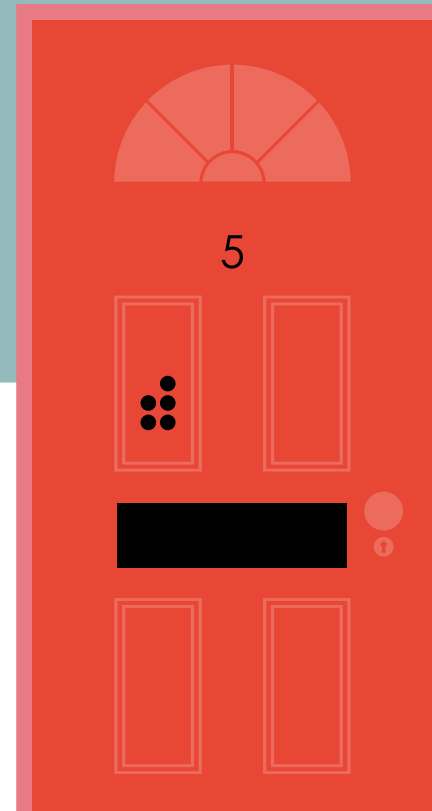


Yes, the missing
number was fifteen

15 

Great work!

You sequenced all the streets



Supported by

