

# Thank the people who help us: Christmas tree greetings card

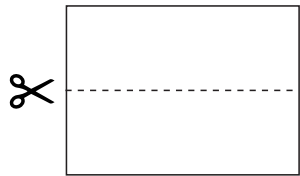
## EQUIPMENT

- Ruler
- Pencil
- Scissors
- A4 card
- Ribbon/string
- Decorating materials e.g. stickers, pens, coloured pencils

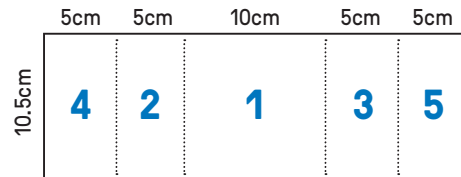
## TIP

Adults, you might need to help with the tricky bits, including the cutting out and measuring.

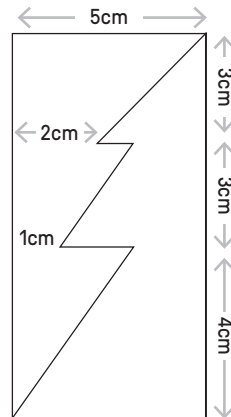
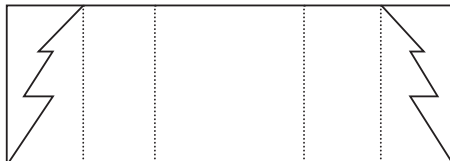
- 1** Cut your A4 card in half horizontally.



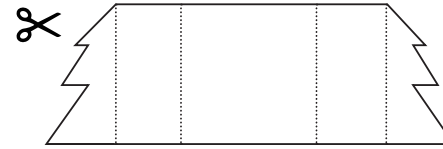
- 2** Measure the card into 5 sections using a pencil and ruler to gently mark each section. The image below shows the measurements of each section.



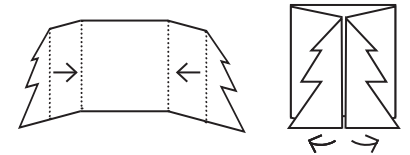
- 3** On section 4 draw half a Christmas tree and do the same on section 5. With your ruler and pencil mark the points using the measurements in the diagram on the right. Remember to use the pictures to help, the picture below shows what your card should look like.



- 4** Cut out the Christmas tree in sections 4 and 5.



- 5** Fold sections 2 and 3 towards the middle of the card and fold sections 4 and 5 outwards. Once folded you should have a square card with the Christmas tree facing you.



- 6** Decorate your card using any design you want. Don't forget to add your message inside!



- 7** Finish by using the ribbon to wrap around the card and tie into a bow.



## FINISHED!

Your card is now ready to be sent. Ask your adult to help you hand it to your postie or find an envelope and stamp and pop it in the post. Remember to make sure it is posted in time for the Christmas Post!