

FUTURE MAIL

STUDENT CHALLENGE CARD

Future Mail How will mail be delivered in the future?

Nicknamed the **Robot Railway**, Mail Rail was the first of its kind anywhere in the world.

Mail Rail ran under London for over 75 years, carrying up to 4 million letters a day.

However Mail Rail closed in 2003 because it had become cheaper to move mail by road.

Your challenge Work as a team to design a method of transport for the future. Make a paper prototype of your design.

Prepare a pitch to share your idea with the class.

Be ambitious, be original and think big!

Decide and agree Choose team roles for the challenge. Who will project manage? Who will design the transport? Who will make the prototype? Who will present the pitch? Decide on a team name.

Team name

Talk about Different types of transport. What are the pros and cons of them?

What will life be like in 2050? How will people communicate?

Discuss your ideas for a new form of transport.

Write down your initial ideas here

.....
.....
.....



Evaluate your ideas

Discuss the different ideas and decide which is best.

Develop your best idea. How will it work? Can it be improved?

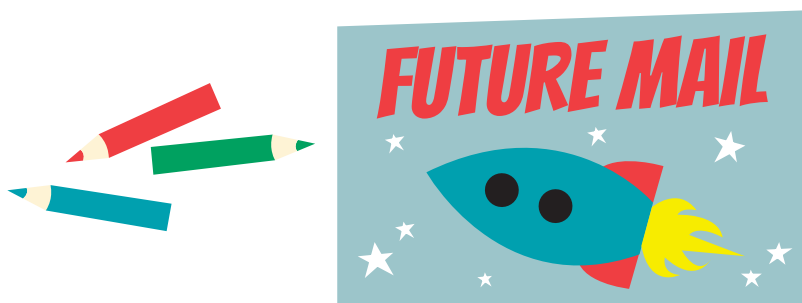
Make your prototype

Use paper to make a prototype of your design. Discuss what materials the real transport method would be made of, and how big it would be.

**Develop your pitch**

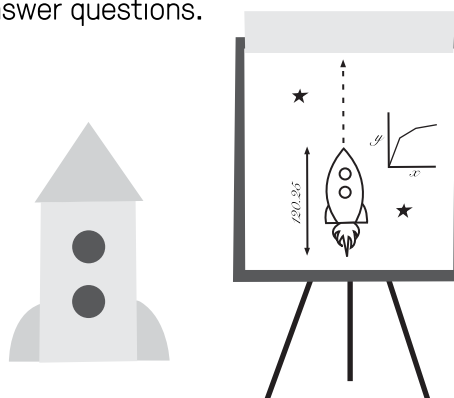
Make a presentation to pitch your idea to the class. You should say what the benefits of your transport method are and why it is the best method for the future.

You may wish to design a poster to share your ideas.

**Communicate**

Share your ideas in a pitch to your class. Use your presentation, the prototype and a poster.

Be prepared to answer questions.

**Congratulations!**

You have designed a mail transport method for the future.

Collect your stickers and get ready for your next Investigation.