

SENDING AND DELIVERING



The
Postal
Museum



heritage
lottery fund

LOTTERY FUNDED



The Postal Museum Learning resource Terms of Use



- By downloading this PowerPoint and using these images you agree to The Postal Museum (BPMA) and Royal Mail Group Ltd terms of use.
- The material in this PowerPoint is provided for non-commercial and educational use in your classroom.
- You can use the presentation or individual images in lessons and activities, and print out the images for use in your classroom.
- You can share the presentation with other teachers for non-commercial and educational use in their classrooms.
- Image credits must be included wherever the image is used. These are below each image, e.g. ©The Postal Museum 2010-0423/2
- Non-The Postal Museum material is included at the agreement of the copyright holder and must also be credited, e.g. ©Courtesy of BT heritage and archives



©Royal Mail Group 2015, courtesy of The Postal Museum, POST 118/5646

A colour painting of St Martin's le Grand, the headquarters of the General Post Office in London and the first purpose built Post Office in Britain.

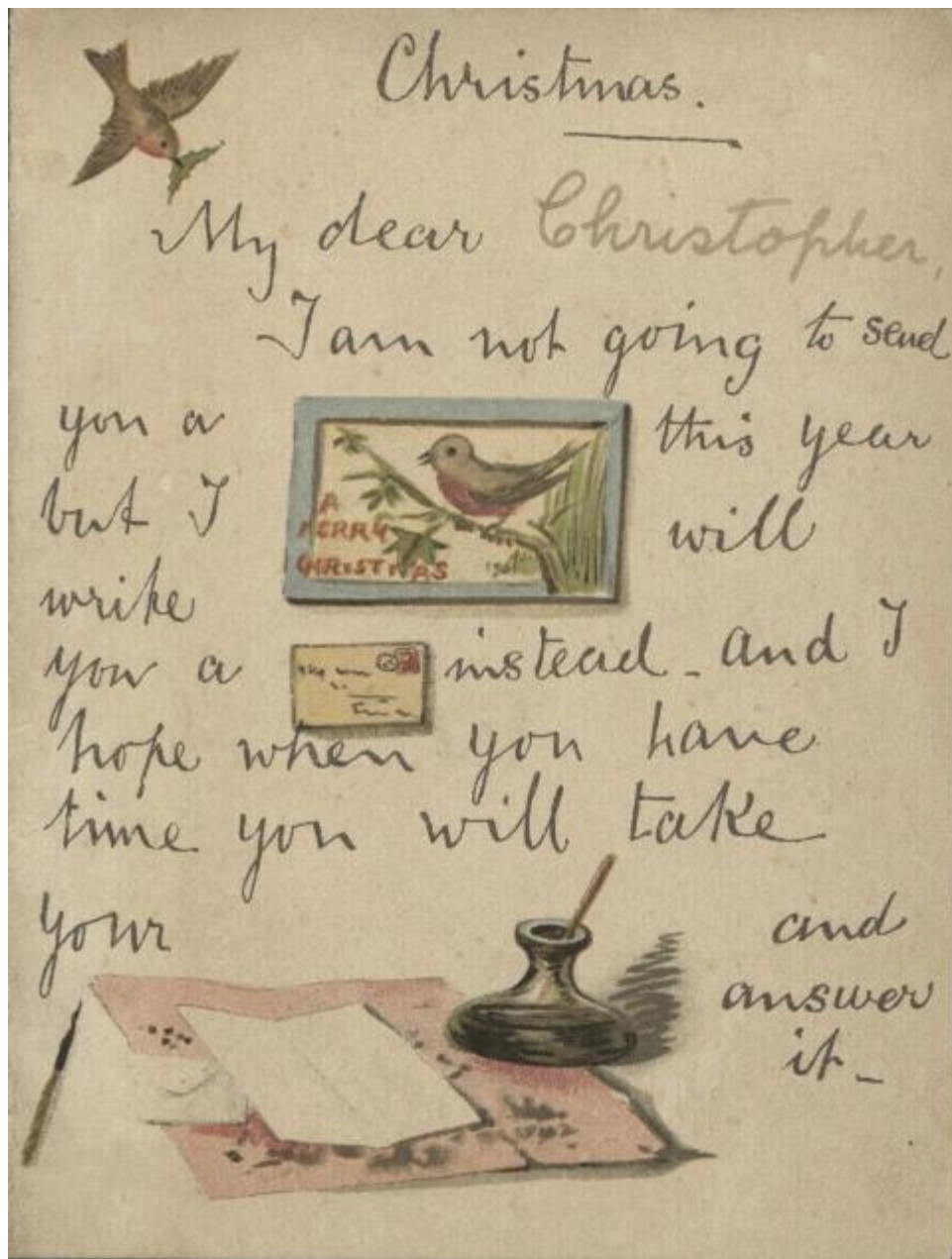


©Royal Mail Group 2015, courtesy of The Postal Museum,
A colour print of the inside of a Post Office showing several different services such as Postal Orders, Postage Stamps and Letters registered to customers.



©The Postal Museum, OB1997.8

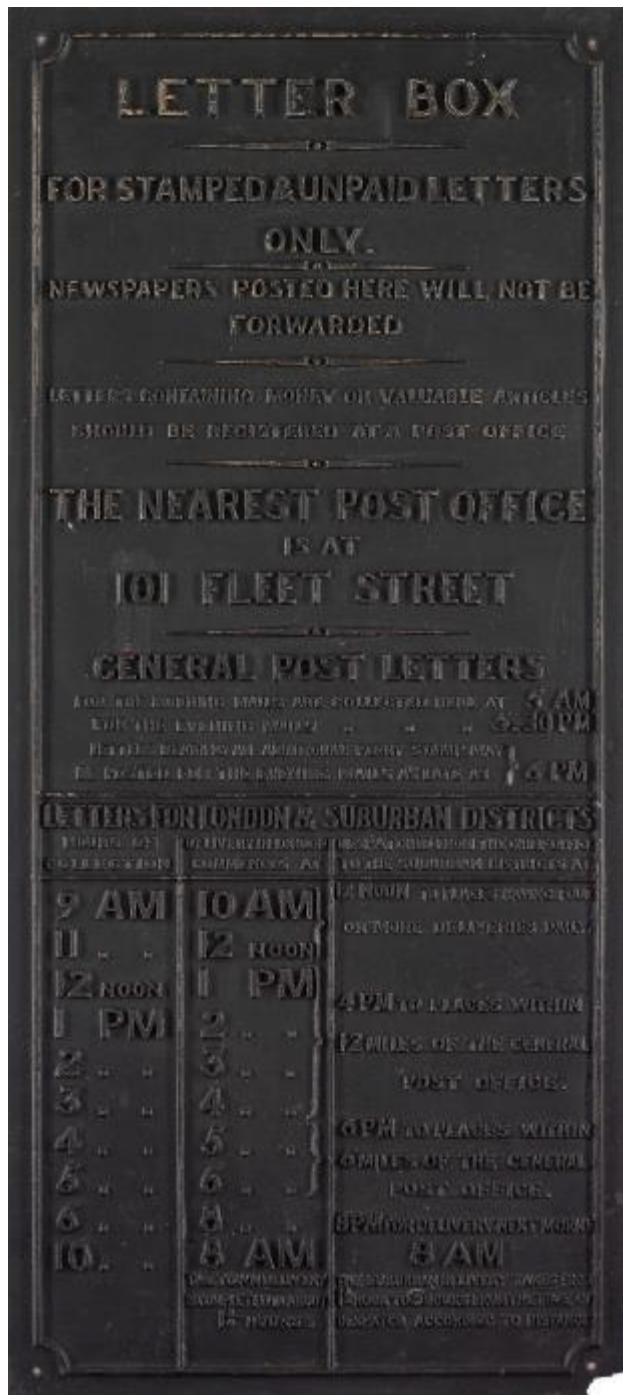
This picture called 'The Country Letter Carrier' was painted by J. P. Hall in 1859. The expressions on the young ladies' faces show how important the post was in people's lives.



©The Postal Museum, 2006-0285/4

This Christmas card was sent from a father to his son in 1896. It is called a 'Rebus' card and uses pictures and words to spell out a Christmas message.



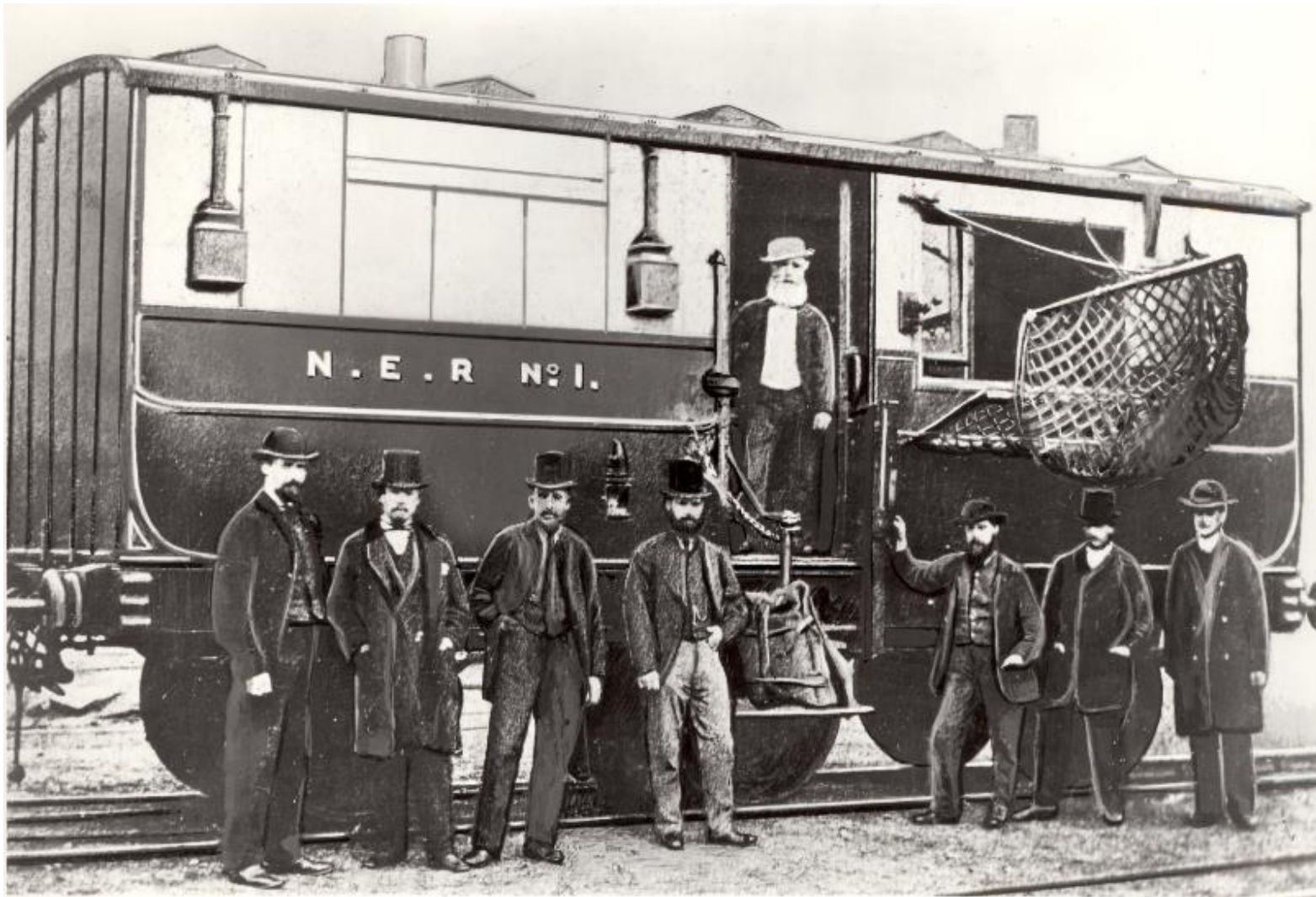


©The Postal Museum, E10432
1855 Collection plate from one of the first London postboxes. It shows the multiple collection times.



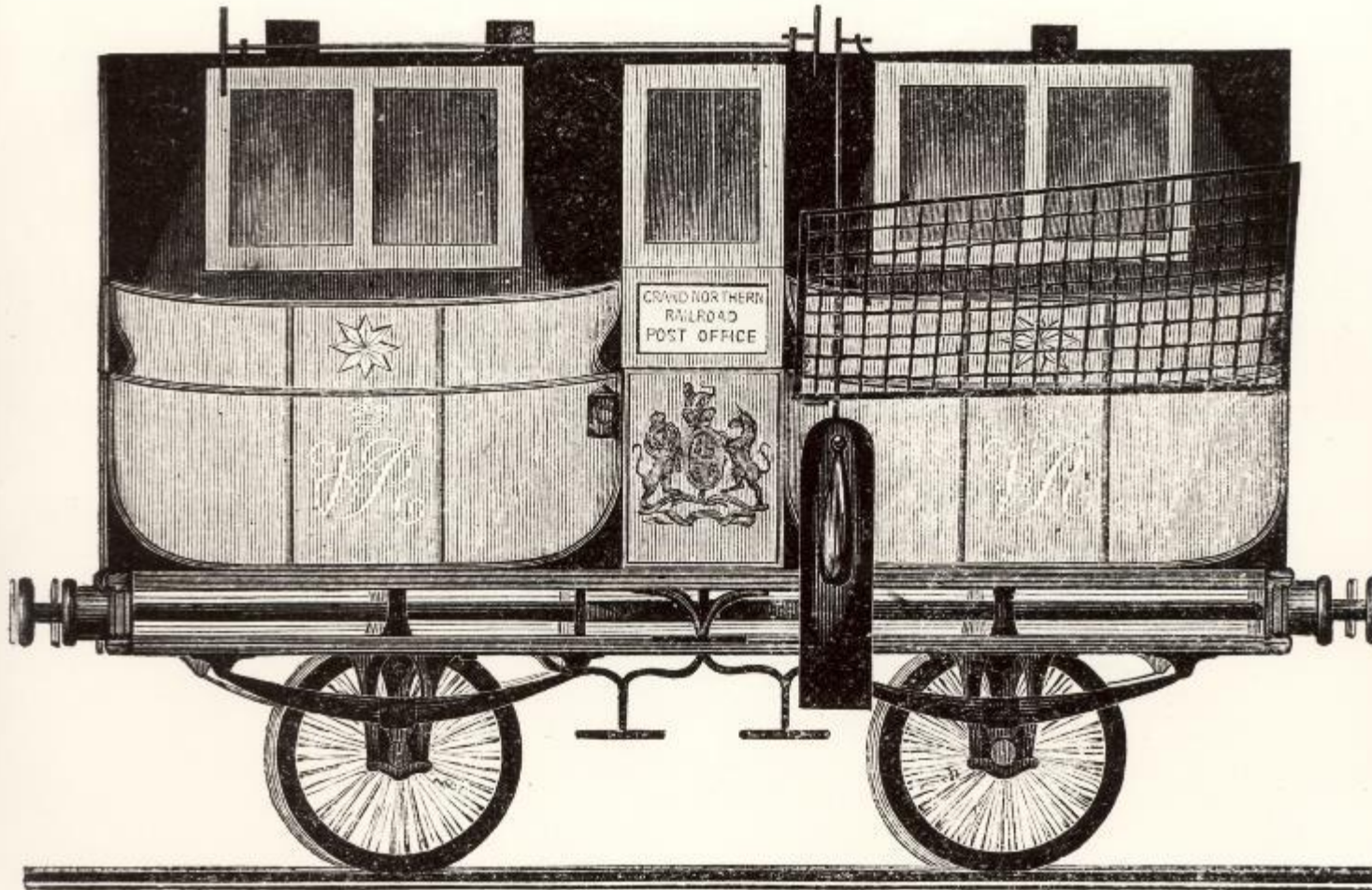
©The Postal Museum, OB1994.225.1

Painting of a Mail coach in a snowstorm. Painted between 1810 – 1894.



©Royal Mail Group 2015, courtesy of The Postal Museum, POST 118_0792

Postal workers stand in front of the first train coach used to sort mail on the North Eastern Railway. 1881. The net on the side is to scoop up bags from the side of the railway track.



TRAVELLING POST-OFFICE, ON THE LONDON AND BIRMINGHAM RAILWAY.

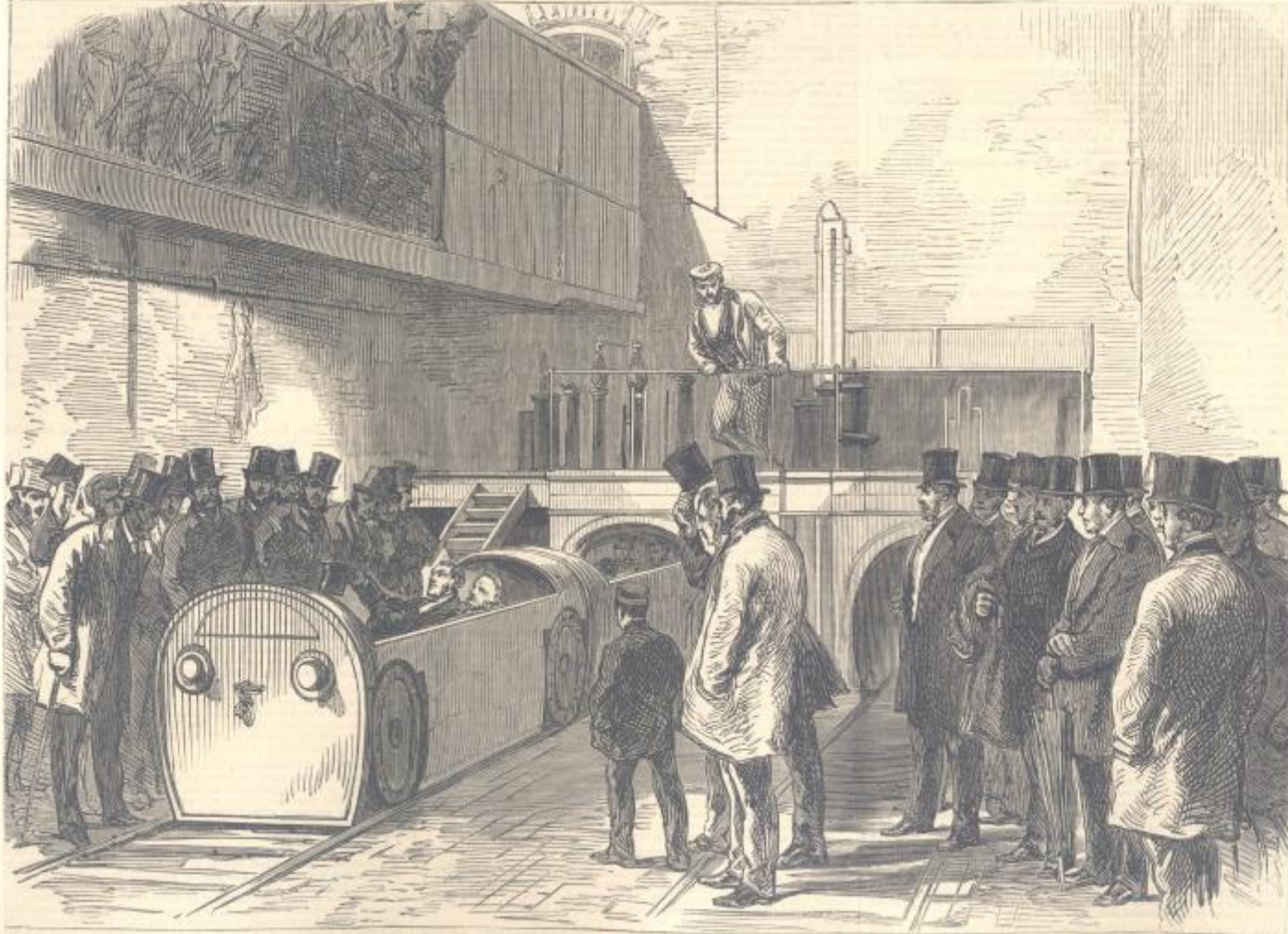
©Royal Mail Group 2015, courtesy of The Postal Museum, POST 118/489

Illustration of an exterior view of a Travelling Post Office carriage used on the London and Birmingham railway. 1839.

SUPPLEMENT, NOV. 15, 1865

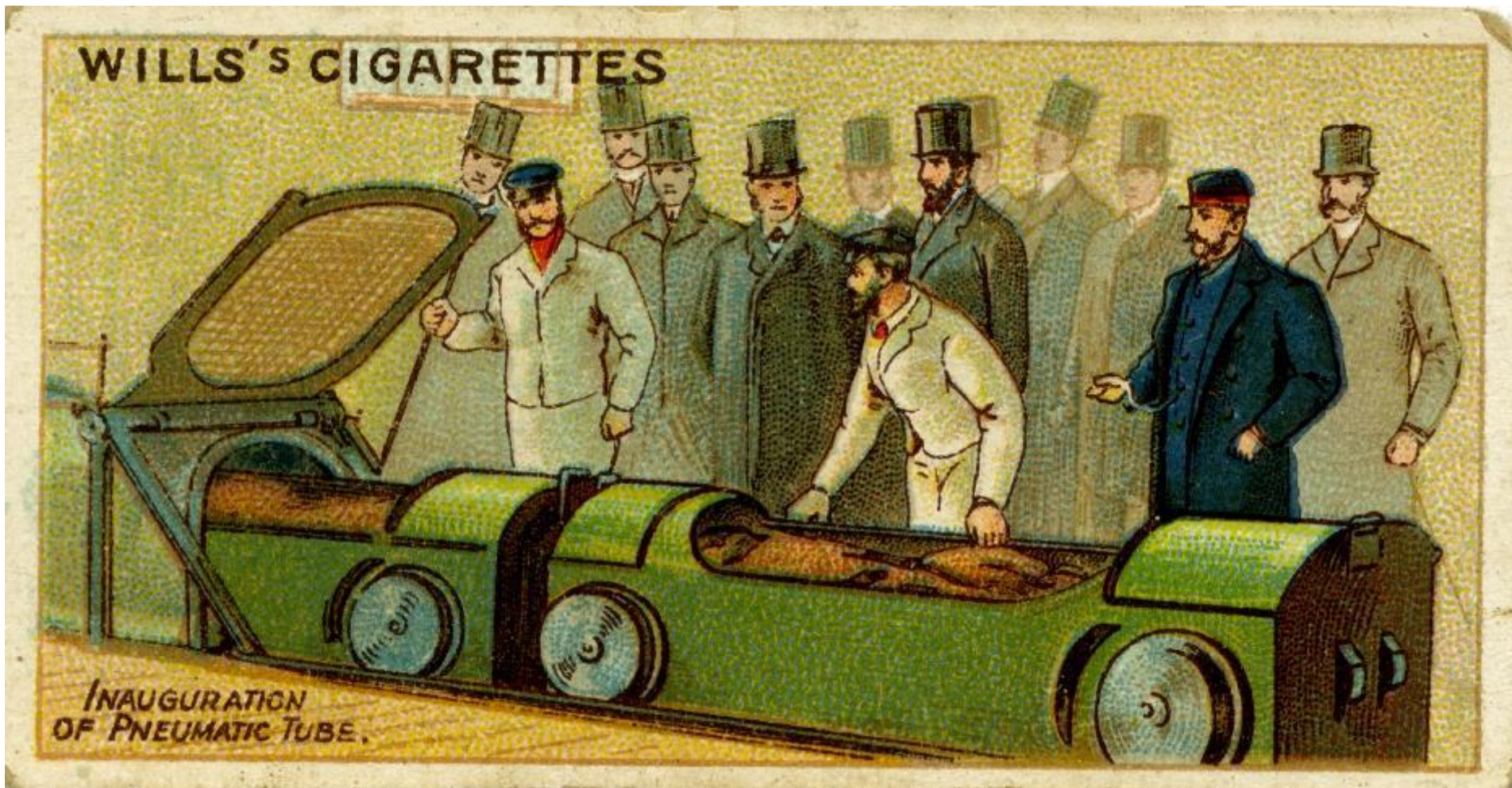
THE ILLUSTRATED LONDON NEWS

493



©The London Illustrated News, November 1865

This illustration shows the grand opening of the pneumatic tunnel at Holborn, London.



©The Postal Museum, 2010-0383-/3

The pneumatic tunnels were only supposed to be used for mail but people loved to climb aboard the pneumatic railway before being blown through the tunnel at 30mph!



©Royal Mail Group 2015, courtesy of The Postal Museum, POST 30/765

A map showing the principal lines of the proposed London Pneumatic Post System. November 1858.



©Royal Mail Group 2015, courtesy of The Postal Museum

In 1829 accelerator carriages were introduced in London. The carriages were designed for postmen to jump off without it stopping. They carried letter carriers from the General Post Office to the start of their delivery route in London.

Postmen, Read This!

Cycles. Cycles. Cycles.

Before buying elsewhere send a Post Card for our 1898 Cycle Catalogue.

To our
Confreres,
Greeting.

3rd In submitting our Cycle Catalogue for the ensuing season (1898), we venture to claim that in this Department of our operations, as well as in other branches, we have justified the object of the Corporation's existence, viz.: "To supply to members of the Service about every article they may require upon much better terms, both cash and credit, than can be obtained in the usual retail channels."

It will be observed that we have included four machines in our List. The "Balmoral" has in one season secured a place in the very front rank of high-grade cycles. A number were supplied to officers of both Departments last year, and in every case gave great satisfaction. The "Broken" also were highly spoken of by our friends. The machine is well known, and we have confidence in recommending it. The "Hampton" is a reliable model, and is remarkably valuable for the money. Several of our customers have already justified to this effect. The "Ardon," although only included in our list this season, has been highly recommended, and we have no hesitation in bringing it under your notice.

It will be found upon comparison that our prices are considerably below those obtained by Cycle Agents. The constitution of the Corporation and the facilities at its command enable it to offer goods at prices which would be unrepresentative to ordinary dealers. It's do not, however, desire to compete with them, and we must impress upon our confreres that it's is a CO-OPERATIVE ENTERPRISE, and every member of the Service purchasing a bicycle will be expected to declare that he acquires the same upon the distinct understanding it is for his own personal use or for a member of his family. Such a condition is summary and fair in the interests of manufacturers and agents, and we confidently rely upon the co-operation of our friends in securing its strict observance.

IMPORTANT.—Owing to the demand for these Machines, intending customers should order early to ensure prompt delivery.

On behalf of the Corporation,

R. C. BERRALL (Postal). GEORGE LANCELLER (Postal). } Directors
GEORGE BEST (Telegraph). W. J. KENNEDY (Postal).

SPECIAL—For Rural Postmen.

As many of our friends amongst the Rural Postmen require a good, strong, reliable machine, and one that will not give them any trouble, we are having made a machine to meet these requirements, fitted with best Cashion Tyres.

Cash Price,	£7 10 0
Twelve Monthly Instalments,	8 5 0
Eighteen " "	6 15 0

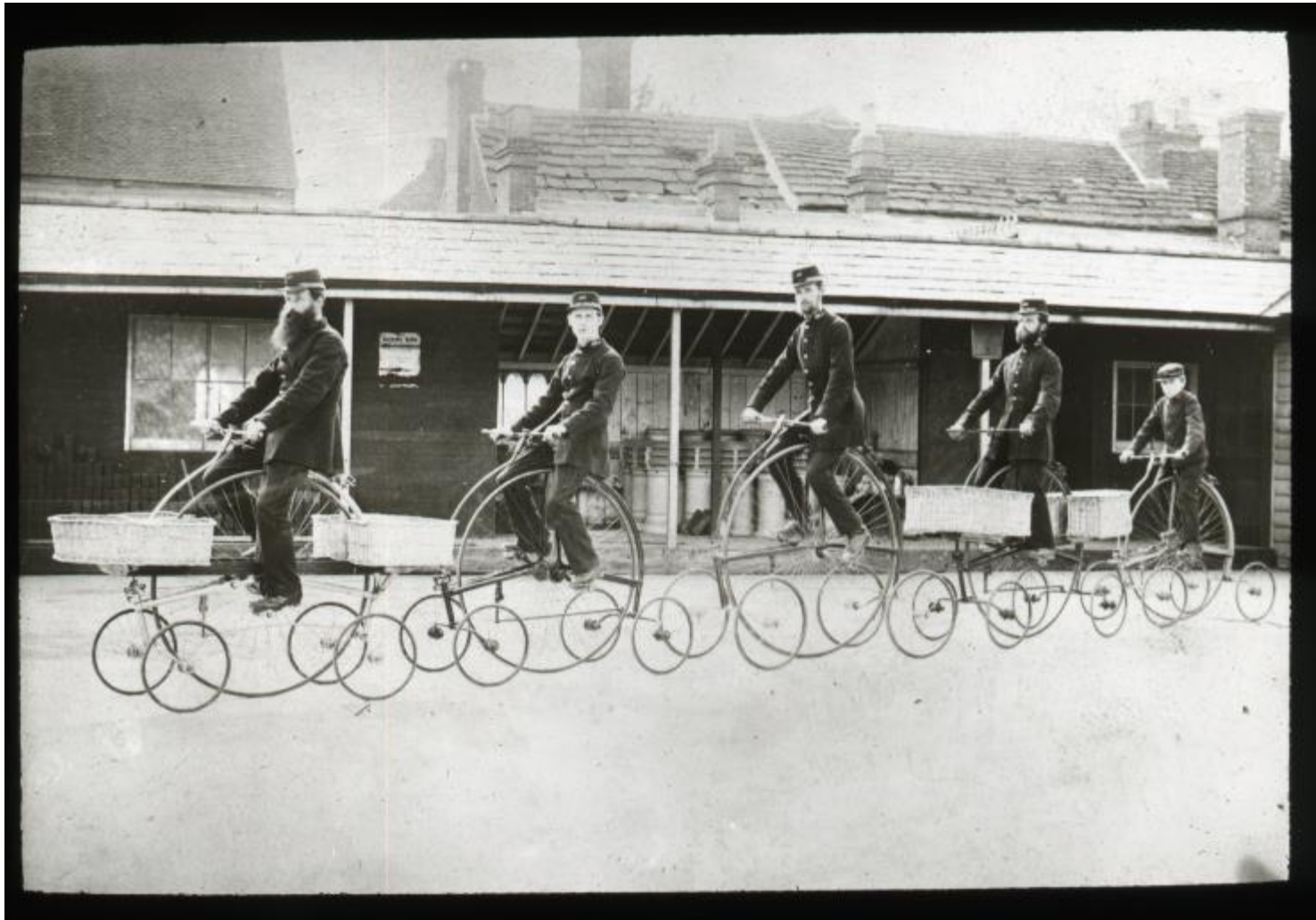
The Postal & Telegraph Employees' Supply Corporation, Ltd.,
BIRMINGHAM.





©Royal Mail Group 2015, courtesy of The Postal Museum

Tricycles were first trialled in Coventry in 1880. They were often used to carry heavier loads.



©The Postal Museum, 2011-0266/17

'Hen and Chicks' were trialled in Horsham in 1882. They had one large wheel (the hen) and four smaller wheels (the chick). They quickly proved too difficult to steer and wore out postman's trousers.

Published under the
Her Majesty's



Authorized
Postmaster General

DAILY PACKET LIST.

GENERAL POST OFFICE.

No. 10,916

(JMS)

MONDAY, FEBRUARY 24, 1863

DAILY STATEMENT OF THE PACKET BOATS.

Destinations.	Destinations.	Mails up to London.	Mails due in London.	Mails out.	Date.	Mails due.
Dover	Calais	Twice daily, Sunday except	Twice daily, Sunday except	4-1 General		
	Orford	Every day Sunday except	Daily	2		
The Thames	Holland	Wed. & Sat. 10 a.m.	Monday & Thursday	1		
	Hamburg	Tuesday and Friday	Tuesday & Saturday	1 Sunday		
Holland	Dublin	Twice daily, Sunday except	Daily	2	21 22	
Southampton	Jersey & Guernsey	Mon, Wed. & Friday Even.	Tue, Thurs. & Sunday			

SOUTHAMPTON STATION.

Destinations.	Mails despatched from Southampton.	Mails called at Southampton.	Mails out at Southampton.	Arr. at Southampton and date of mails.
Lisbon, Spain, and Gibraltar	On the 2nd, 12th, & 22nd of every Month.	MAHON..... Feb. 17	Next Mail due Mar. 6	EXETER..... Feb. 10
Gibraltar, Malta, Greece, & Ionian Islands	10th of every Month.	RIPOD..... Feb. 20	Next Mail due Mar. 10	Calcutta..... 10
Egypt, Ceylon, India, and China				Open..... 10
(1) British Colonies in W. Indies, (except Honduras & Mexico); Foreign Colonies & in W. Indies, (except Hawaiian, California, Venezuela, N. Granada, Grey Town, & N. New Guinea).	2d and 17th of every Month.	TRINIDAD..... Feb. 17	Next Mail due Feb. 20	Yagu..... 10
(2) Mexico	2d of every Month only.	CAYENNE..... Feb. 2	Next Mail due Mar. 5	
(3) Havana, Honduras & Mexico	17th of every Month only.	TRINIDAD..... Feb. 17	Next Mail due Feb. 20	
(4) Chile & Peru; Mails for Chili & Peru will be forwarded also to the Mail of each Month, but only as far as Panama.	17th of every Month.		Next Mail due Mar. 5	
Lisbon, Madeira, Brazil, and Buenos Ayres	10th of every Month.	TRINIDAD..... Feb. 17	Next Mail due Mar. 5	

LIVERPOOL STATION.

Destinations.	Mails despatched from Liverpool.	Mails called at Liverpool.	Mails out at Liverpool.	Arr. at Liverpool and date of mails.
British North America, Bermuda, & United States	Every second Friday in January, February, and March, and every Friday in May the remainder of the year.	EXETER..... Feb. 13	CAYENNE..... Feb. 16	

NOTICE.

"H.M.S. 'Calliope' will shortly sail from Liverpool, with Mails for Madeira, Rio de Janeiro, and Sydney (New South Wales). Letters for Madeira will be taken to a postage of 1s 10d the half ounce, and so on, and Newspapers to a charge of 2d each. Letters for Rio de Janeiro will be taken to a postage of 1s 6d the half ounce, and so on, and those for Sydney to a postage of 1s the half ounce, and so on, but Newspapers both for Rio de Janeiro and for Sydney will be conveyed free. Letters and Newspapers intended to be sent by this vessel must be specially addressed. "By H. M. S. Calliope."

VIGO, LISBON, CADIZ, GIBRALTAR, WESTERN INDIA, GUYANA, INDIA, AND CHINA.

Express, arrived brought Passengers, Capt. Lister, Mr. & Mrs. Bishop, Mr. and Mrs. Curdson, Dr. Wainwright, Messrs. Deane, Tupper, Mayer, Rice, Reed, Hawkins, Mrs. Lister and family, Mr. Murray, and Miss Davis.

INDIA, for the Peninsula, Arr. Mails of the Morning of the 27th inst. The next Mails for GIBRALTAR, MALTA, GREECE, the Ionian Islands, EGYPT, INDIA, &c., and Southampton, will be despatched from hence on the Morning of the 29th inst. The next Mails for the Mediterranean, Egypt, India, &c., via Hamilton, will be despatched from hence this Evening.

MADEIRA, BRAZIL, AND BUENOS AYRES.



Royal Mail



heritage
lottery fund

LOTTERY FUNDED



The
Postal
Museum

©Royal Mail Group 2015, courtesy of The Postal Museum,
POST 41-43

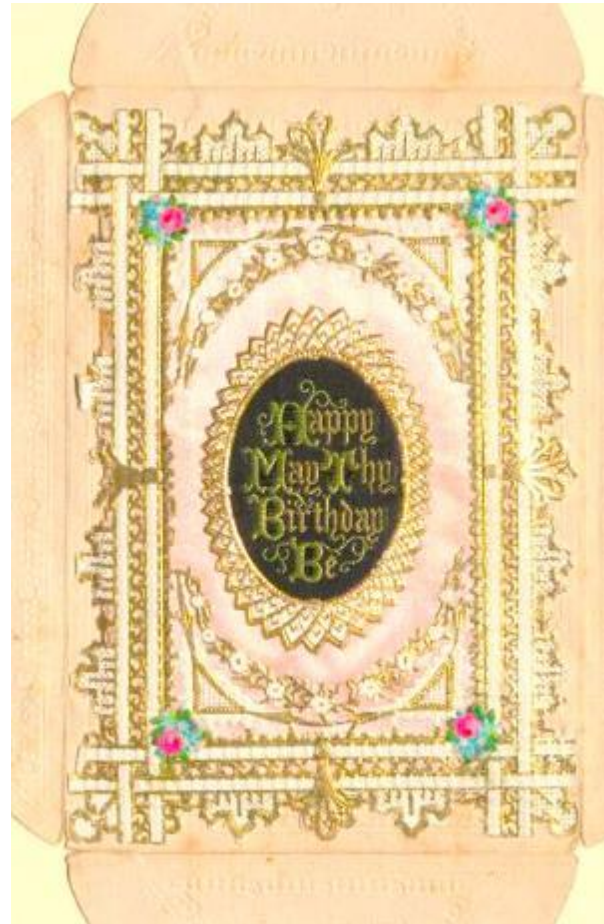
Daily packet lists recorded all the journeys made on a particular day.





©Royal Mail Group Ltd, 2015 courtesy of The Postal Museum
Stamp commemorating the maiden voyage of the Great Western Steam Ship in 1838.





From left to right

©The Postal Museum, OB2006.0885/7

A Christmas Greeting card with a child postman. Manufactured in Bavaria c.1860-1890

©The Postal Museum, OB1995.162/57

Happy Birthday card with a perfumed sachet in an embossed envelope. C.1870

©The Postal Museum, 2006-0285/5

Post box shaped Christmas card with rhyme. Manufactured in Germany. c.1860-1890