

ROWLAND HILL'S LEGACY



The
Postal
Museum



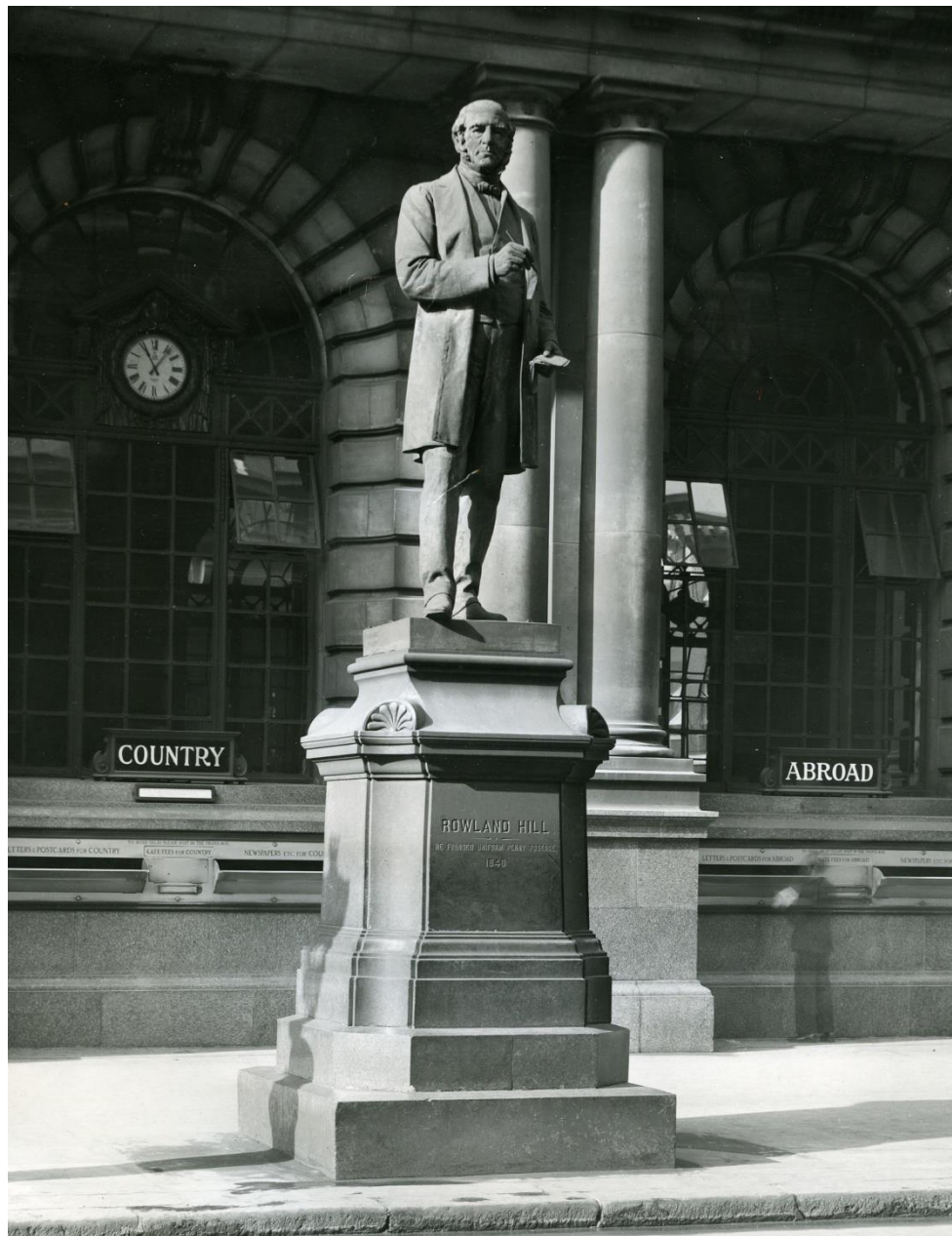
heritage
lottery fund
LOTTERY FUNDED





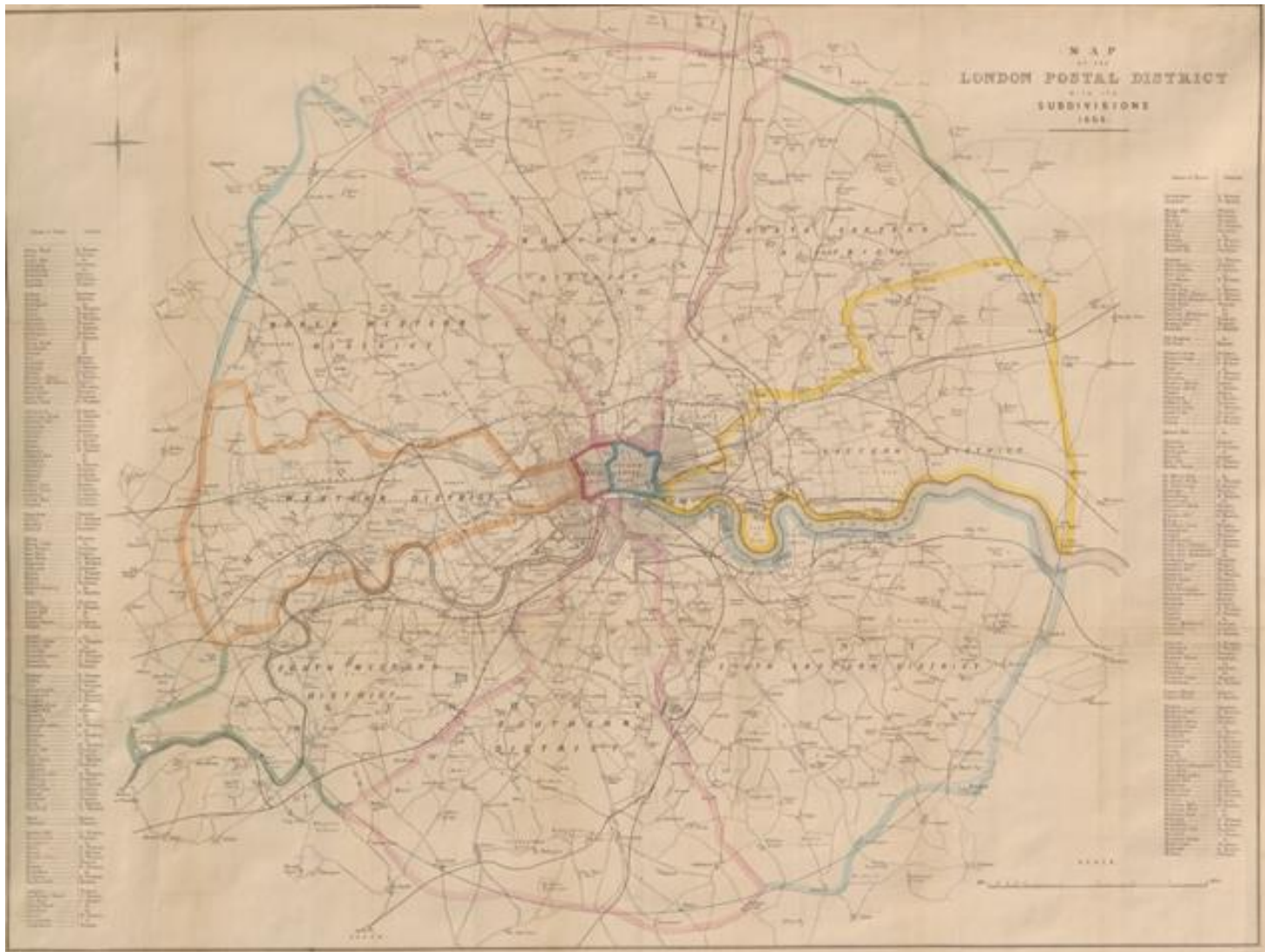
The Postal Museum Learning resource Terms of Use

- By downloading this PowerPoint and using these images you agree to The Postal Museum and Royal Mail Group Ltd terms of use.
- The material in this PowerPoint is provided for non-commercial and educational use in your classroom.
- You can use the presentation or individual images in lessons and activities, and print out the images for use in your classroom.
- You can share the presentation with other teachers for non-commercial and educational use in their classrooms.
- Image credits must be included wherever the image is used. These are below each image, e.g. ©The Postal Museum 2010-0423/2
- Non-The Postal Museum material is included at the agreement of the copyright holder and must also be credited, e.g. ©Courtesy of BT heritage and archives



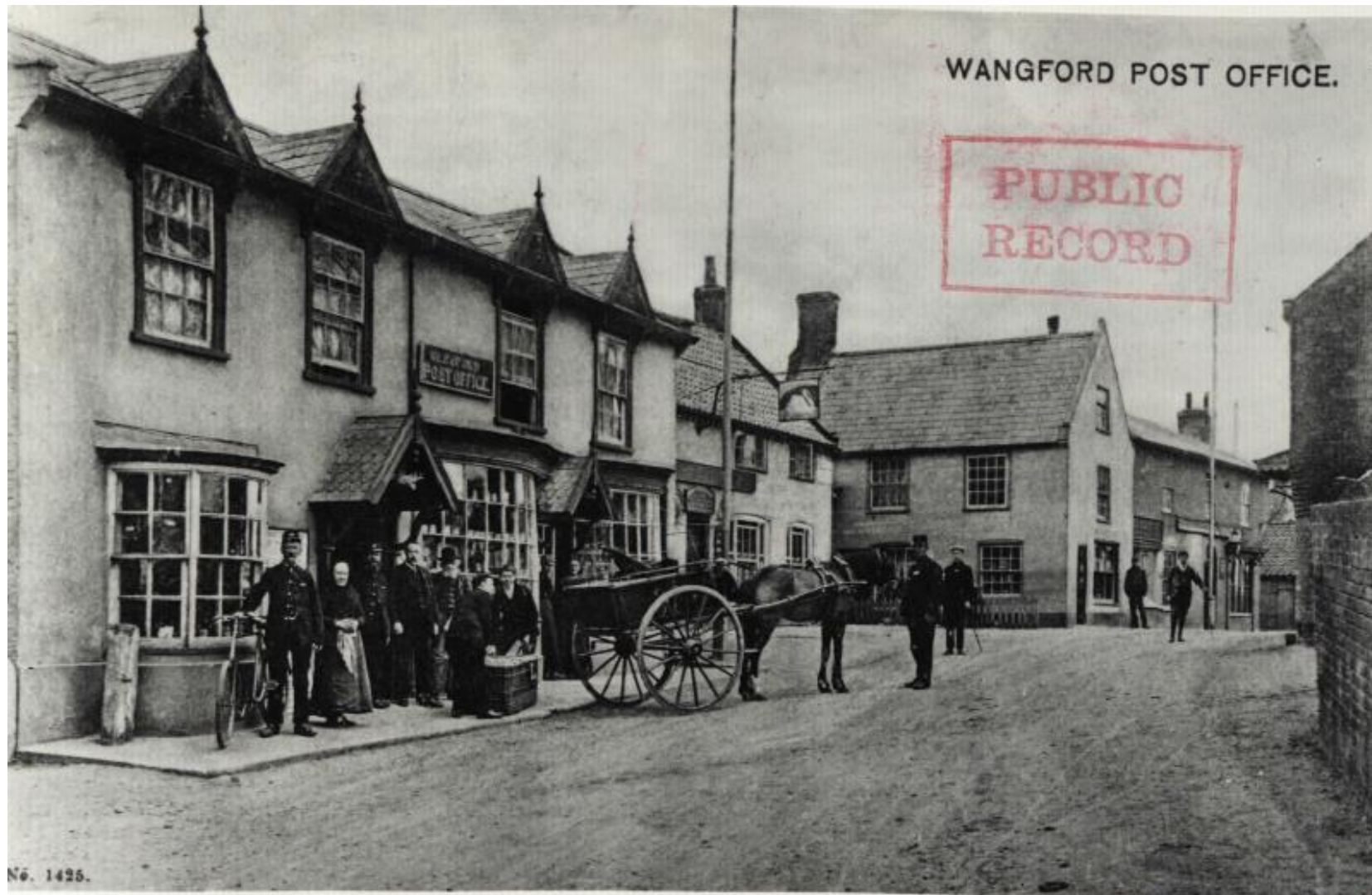
©Royal Mail Group 2015, courtesy of The Postal Museum

Statue of Rowland Hill outside the former General Post Office headquarters in London.

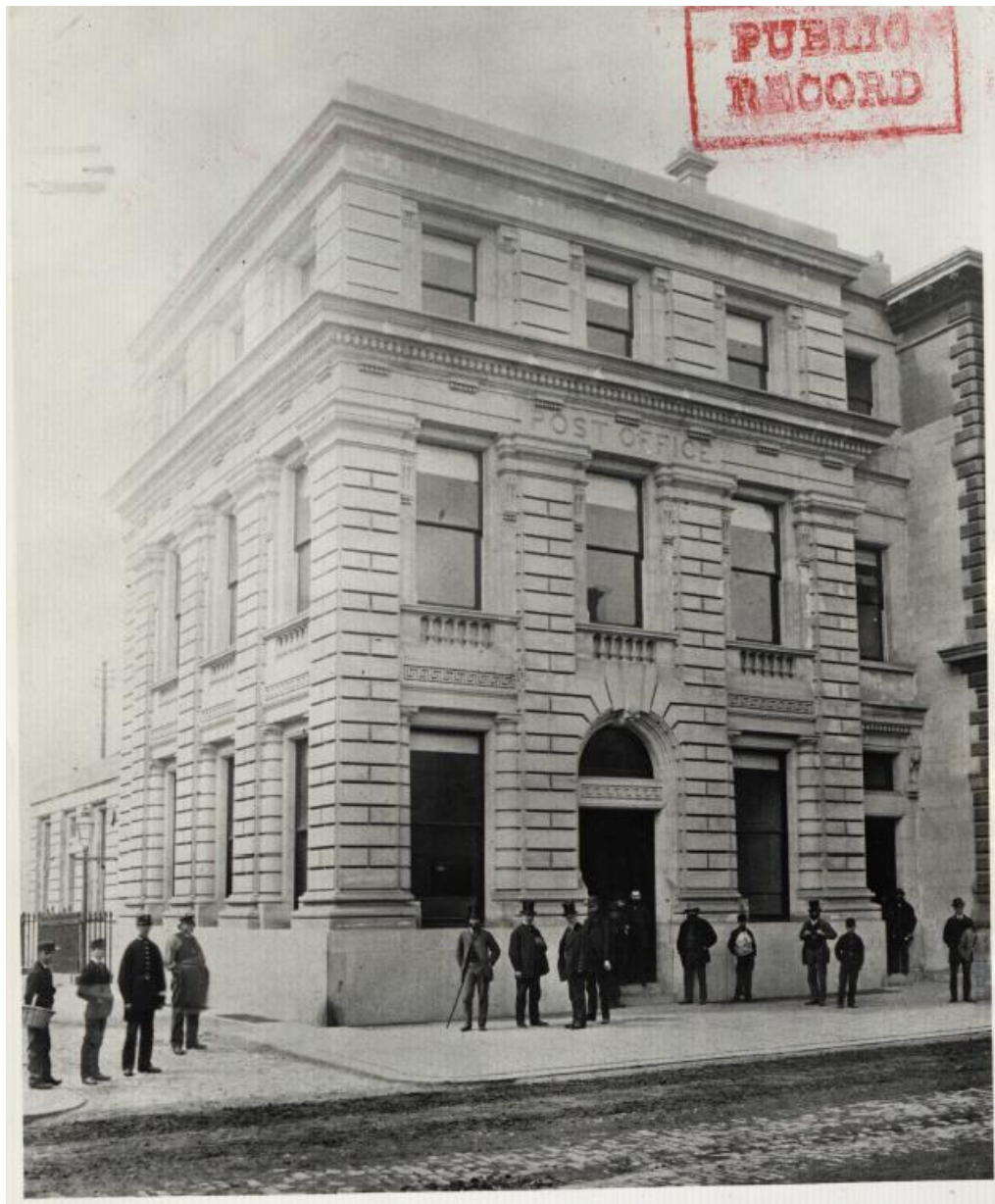


WITH **SIXPENCE.**
TWO SUPPLEMENTS By Post, 6d.

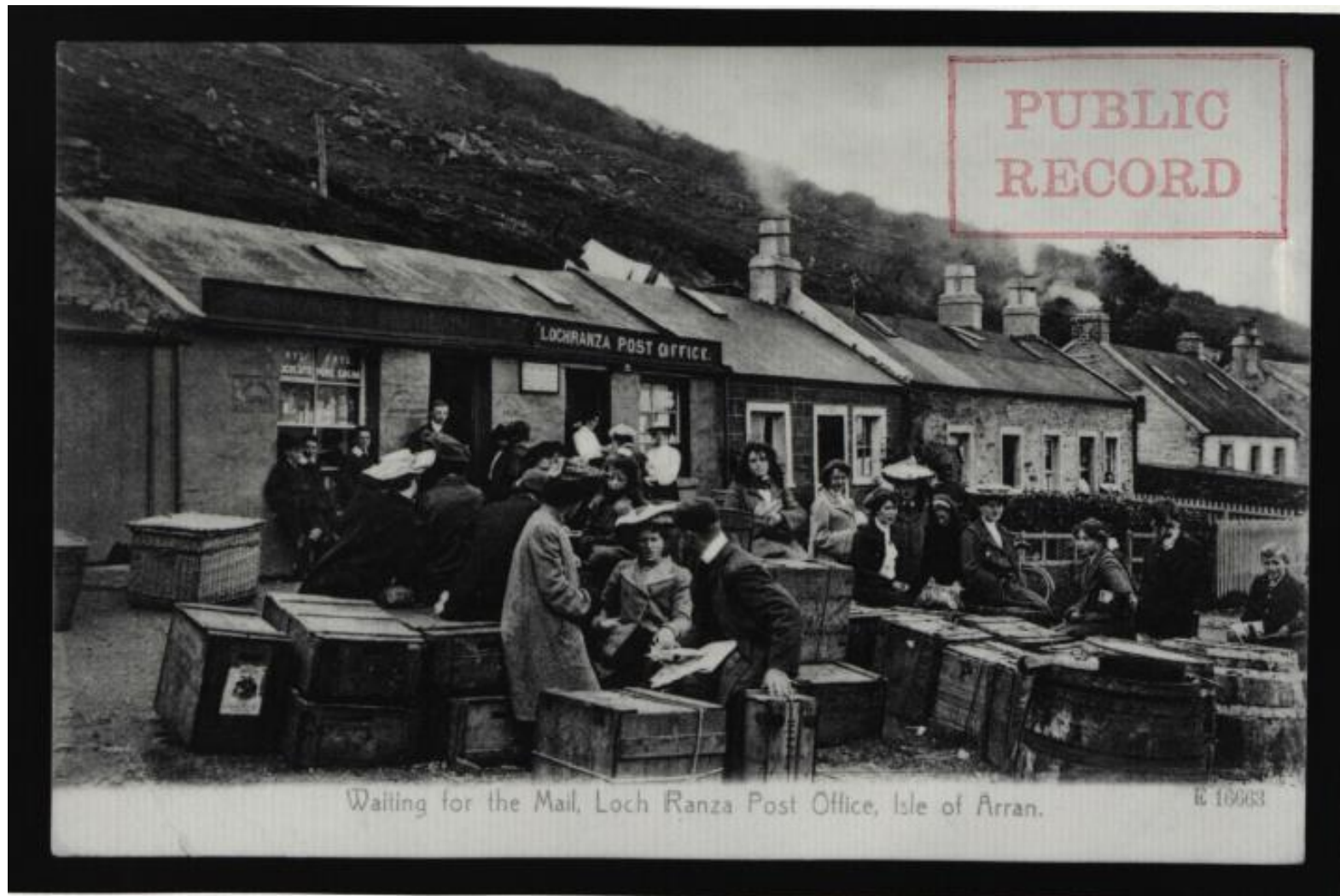




©Royal Mail Group Ltd, 2015, courtesy of The Postal Museum
Wangford Post Office, c.1900 with horse drawn van outside



©Royal Mail Group Ltd, 2015, courtesy of The Postal Museum
Cardiff Post Office built in 1886. Post Offices were often very grand buildings.



©Royal Mail Group Ltd, 2015, courtesy of The Postal Museum

Post Offices opened in remote places. This is Loch Ranza, Isle of Arran c.1900



©Royal Mail Group Ltd, 2015, courtesy of The Postal Museum, St Martin's Le Grand, POST 92 1909

Elizabeth Dickson walked thirteen and a half miles a day. In her career this was equal to more than five times round the world!



©The Postal Museum, OB1994.45

Post boxes with the Edward VIII cipher are very rare because he was king for less than a year in 1936 and was never crowned.



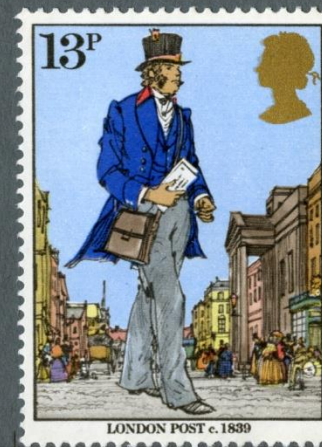
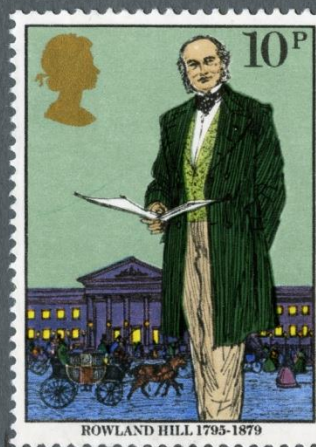


©Royal Mail Group 2015, courtesy of The Postal Museum POST 118/5373
This plaster head of Queen Victoria II was made by Arnold Machin and is used on definitive stamps today



©Royal Mail Group 2015, courtesy of The Postal Museum

The first commemorative stamp was issued in 1924 to mark the British Empire exhibition.



©Royal Mail Group 2015, courtesy of The Postal Museum

Rowland Hill and his postal reforms have been commemorated on several commemorative postage stamps.



©Royal Mail Group 2015, courtesy of The Postal Museum

Rowland Hill and his postal reforms have been commemorated on several issues of postage stamps.